



BMP®53 **LABEL** **PRINTER**

User Manual



Unpack Your Printer

The following items are included in the standard BMP®53 Mobile Printer package:

- BMP®53 printer
- MC-1500-595-WT-BK cartridge
- USB connection cable
- Product CD
- Brady Printer Drivers CD
- Quick Start Guide

The following items are accessories available for the BMP®53 printer:

- BMP Lithium Ion Battery Pack (BMP-UBP)
- AC adapter (M50-AC)
- Magnet (M50-Magnet)



These items can be purchased separately or as a kit from your distributor.

Save Your Packaging

The packaging surrounding your BMP®53 printer should be saved in the event you have to ship the printer and accessories back to the supplier.



WARNING

Never ship the BMP®53 printer without first removing the BMP-UBP Lithium Ion battery pack from the printer.

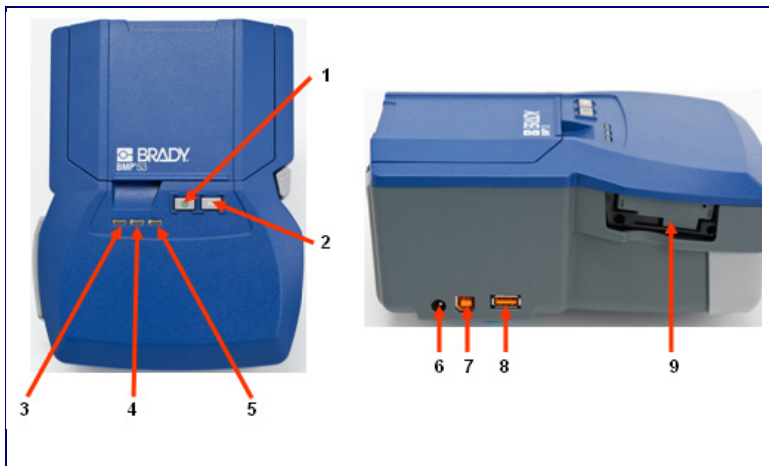
If shipping both the printer and battery pack, remove the battery pack from the printer and place the items in the original shipping material before transporting. Batteries must be shipped according to state, federal, or municipal regulations. Consult your courier before shipping lithium-ion battery packs.

Register Your Printer

Register your printer on-line at www.bradycorp.com/register.

External View

The BMP[®]53 Mobile Printer is a peripheral device that prints labels and label files created on a PC, Mobile Device, or Smart Phone using a labeling software program, such as LabelMark™ Labeling Software or Brady Mobile Software. Labels and label files are transferred to the peripheral printer through a USB cable or through a Bluetooth or WIFI connection using the Brady Network Card.



1	Power	4	Brady Network Card Enable/Disable	7	USB port
2	Feed/Clear	5	Status	8	Thumb Drive-Port
3	Power/Battery Life	6	AC Adapter port	9	Brady Network Card port



WARNING

Avoid using the system near water, in direct sunlight, or near a heating device.

Do not attempt to use batteries other than those recommended in this manual.

Setting Up the Printer

Power is supplied to the BMP[®]53 printer through a battery tray containing eight AA batteries, a BMP Lithium Ion battery pack (sold separately), or through an AC power adapter.



WARNING

Do not expose batteries to temperatures above 60C (140F).

Do not disassemble or mistreat the battery pack.

Do not attempt to open, damage, or replace components in the battery pack.

The Battery Pack should only be used in the BMP[®]51 and BMP[®]53 printers.

Do not use any other rechargeable battery pack other than the BMP-UBP in the BMP[®]51 and BMP[®]53 printers.

Do not allow metal or other conductive materials to touch the battery terminals.



WARNING

Keep the battery pack away from sparks, flames, or other heat sources.

Keep the battery pack away from water.

Never lay objects on top of the battery pack.

Store your battery pack only in a cool, dry place.

Keep the battery pack out of the reach of children.

The battery pack must be recycled or disposed of properly according to federal, state, and municipal regulations.



WARNING

Do not dismantle, open or shred secondary cells or batteries.

Do not expose cells or batteries to heat or fire. Avoid storage in direct sunlight.

Do not short-circuit a cell or a battery. Do not store cells or batteries haphazardly in a box or drawer where they may short-circuit each other or be short-circuited by other metal objects.

Do not remove a cell or battery from its original packaging until required for use.

Do not subject cells or batteries to mechanical shock.

In the event of a cell leaking, do not allow the liquid to come in contact with the skin or eyes. If contact has been made, wash the affected area with copious amounts of water and seek medical advice.

Do not use any charger other than that specifically provided for use with the equipment.

Observe the plus (+) and minus (-) marks on the cell, battery and equipment and ensure correct use.

Do not use any cell or battery which is not designed for use with the equipment.

Do not mix cells of different manufacture, capacity, size or type within a device.

When using alkaline cells, always use fresh, new batteries and never mix used batteries with new batteries.

Keep cells and batteries out of the reach of children.

Seek medical advice immediately if a cell or a battery has been swallowed.

Always purchase the correct cell or battery for the equipment.

Keep cells and batteries clean and dry.

Wipe the cell or battery terminals with a clean dry cloth if they become dirty.

Secondary cells and batteries need to be charged before use. Always use the correct charger and refer to the manufacturer's instructions or equipment manual for proper charging instructions.

Do not leave a battery on prolonged charge when not in use.

After extended periods of storage, it may be necessary to charge and discharge the cells or batteries several times to obtain maximum performance.

Secondary cells and batteries give their best performance when they are operated at normal room temperature (20 °C ± 5 °C).

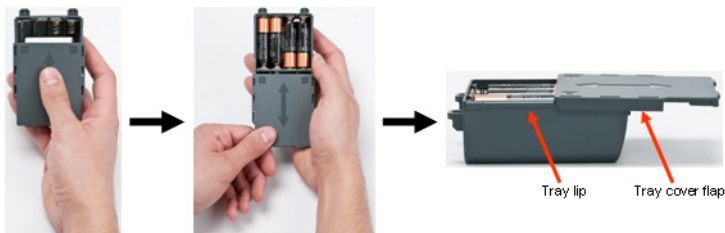
Retain the original product literature for future reference.

Use only the cell or battery in the application for which it was intended.

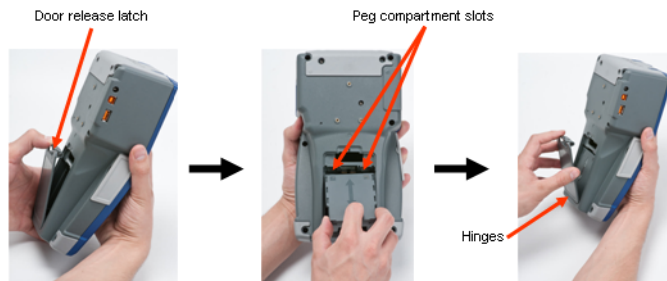
When possible, remove the battery from the equipment when not in use.

Loading the Battery Tray

1. With your thumb on the arrow, slide the top panel of the battery tray downward to open the tray.
2. Insert eight AA batteries into the tray, observing the correct + and - polarity alignment.
3. When all eight AA batteries are securely in place, replace the top panel by lining up the flaps of the top panel over the lips of the battery tray; then slide the top panel back into place.

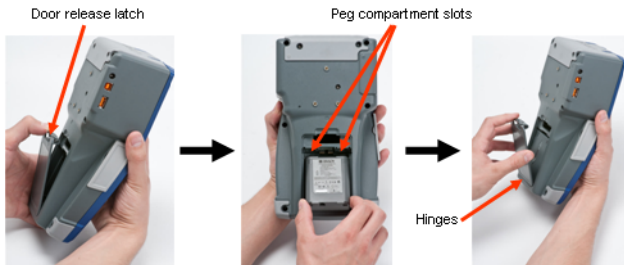


4. On the backside of the printer, using your thumb, pull the door release latch downward, then swing the battery compartment door up and out. (The door will come off.)
5. With the tray cover facing outward, insert the pegs of the battery tray into the peg slots at the top of the compartment; then tip the battery tray downward into place.
6. Re-insert the battery door hinges at the base of the compartment and swing the battery compartment door closed, snapping it into place.



Loading the BMP Lithium Ion Battery Pack

- On the backside of the printer, using your thumb, pull the door release latch downward, then swing the battery compartment door up and out. (The door will come off.)
- With the battery label facing outward, insert the battery pegs into the peg slots at the top of the compartment; then tip the battery downward into place.
- Re-insert the battery door hinges at the base of the compartment and swing the battery compartment door closed, snapping it into place.



Adapter

The printer can be powered through a designated AC power adapter. When the adapter is plugged in, it will also charge the BMP Lithium Ion Battery Pack if one is inserted in the battery compartment. (It will NOT charge AA rechargeable batteries.)



WARNING

Use only the 18 VDC, 3.3A, Brady AC/DC adapters, shown below, for supplying power to the BMP[®]53.

- Insert the round end of the adapter cable into the plug-in port on the left side of the printer.
- Plug the other end of the cord into an electrical outlet.

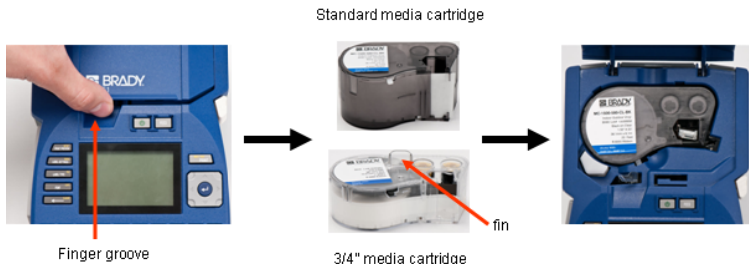


Load Cartridge

To load the cartridge:

1. Place your thumb in the finger groove and push up on the cover lip to open the printer cover.
2. With the cartridge label facing up, drop the cartridge into the cartridge well, pushing gently until it snaps into place. Close the cover by pushing down on it until it snaps into place.

Note: If using the shorter cartridge, hold the cartridge by the fin when dropping into place.

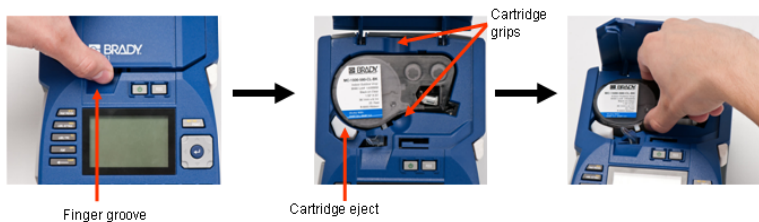


Unload Cartridge

To remove the cartridge:

1. Place your thumb in the finger groove and push up on the cover lip to open the printer cover.
2. Push down on the cartridge eject button.
3. Placing your fingers in the cartridge grip areas (small depressions on the side of the cartridge well) grasp the cartridge and pull it out.

Note: If using the shorter cartridge, grab the cartridge fin and pull up.



Power On

To turn the printer on or off:

1. Press  .

LED Lights

The LED lights on the front of the BMP™53 peripheral printer signify the following:

LED Light	Color	Status
Power/Battery Life	Green	Remains GREEN at full battery life, or if the unit is powered using AC adapter.
	Yellow	Turns YELLOW when battery life is reduced.
	Red	Turns RED when battery life is low.
USB Connected	Green	GREEN light displays when printer is connected to a PC
Status	Red - Flashing	FLASHES RED if an error is detected in the printer.

Connecting to a PC

The BMP[®]53 peripheral printer prints data received from a Brady labeling software program. You cannot create labels on the peripheral printer. The BMP[®]53 printer receives label data through a USB, Bluetooth, or WIFI connection.

Before you can send data to the BMP[®]53 printer, you must install its print driver on your PC. The printer drivers can be found on the Brady Printer Drivers CD, enclosed with your printer package.

The BMP[®]53 printer is a “plug-and-play” device which means your PC will automatically recognize the new hardware (printer) when it is attached and will launch a wizard that will auto-install the printer drivers.

To install the printer drivers:

1. Attach the small end of the USB cable to the printer, then the flat end of the cable to the PC.

2. Turn the printer on.

On the PC, “Found New Hardware” pops up in the lower right corner of the screen.

3. Insert the Brady Printer Drivers CD into the CD drive of your computer.

The printer driver wizard is launched.

4. Follow the prompts on the screen for installation of a particular driver.



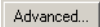
Note: After successful completion of the installation process, follow the directions included with the Label Software. If it appears that the printer has lost communication with the host computer while still connected via the USB cable, turn the printer off, then restart it to restore the connection.

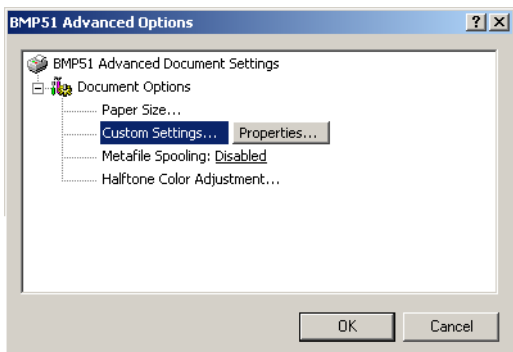
Download Print Drivers

You can also download the print drivers from the Brady website at www.bradyid.com. On the website, choose **Support>Downloads**, then follow the instructions on the screen.

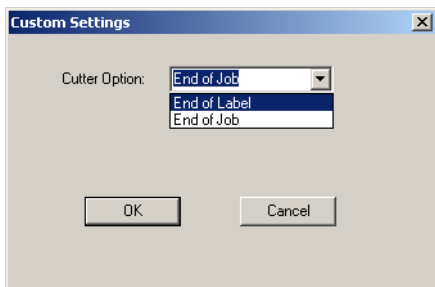
Pause/Cut Preference

After the printer driver is installed, access the printer and set the Pause/Cut preference.

1. In Windows, click Start.
2. Choose Settings>Printers and Faxes.
3. In the list of available printers, right click BMP51 and choose Printing Preferences. The Layout tab of Printing Preferences displays.
4. Click  button.
5. On the Advanced Options screen, click Properties button for Custom Settings.



6. On the Custom Settings screen, click the down arrow in Cutter Option field and select if you want to pause the printer for cutting at the end of each label or at the end of the job.



7. Click OK to accept the changes. (You may have to click OK a number of times as you back out of the Printing Preferences screens.)

Wireless Driver Installation

The Brady Network Card, USB, and Wireless drivers, along with the driver installation instructions, can be found on the Brady Printer Drivers CD.

1. Insert the Brady Printer Drivers CD into the CD drive of your computer.
2. Follow the prompts on the screen for installation of a particular driver.

Printing a Label

Use the print application on your mobile device to send labels to the BMP®53 peripheral printer for printing.

After printing, to cut the label:

1. Push the cutter lever down as far as it will go.
2. Gently pull the label from the rollers in the label exit chute.



Printing from the BMP®53 printer occurs in the background, meaning you can continue to edit or create new labels in your labeling software while the file is printing.



Brady Australia Pty Ltd.

2 Bellevue Circuit

Greystanes NSW 2145

Email: brady_aust@bradycorp.com

Phone: 1800 620 816

Fax: 1800 805 076

Website

Australia: www.bradyid.com.au