



Colour Your Way to an Improved Workplace

**BBP®37 Colour and Cut
Sign & Label Printer**

**BBP®35 Multicolour
Sign & Label Printer**

www.bradyid.com.au/bbp37

Colour Your Way to an

Unprecedented Capabilities Set the New Standard in Safety & Facility Identification

Because safety and productivity mean the world to you, it's time to step up to the new standard by creating signs and labels that demand attention. After all, effective workplace visuals make all the difference in taking your facility to the next level by giving employees the information they need right at a glance.

And now there's a tool to do it all!

Brady's BBP®35 and BBP®37 sign and label printers give you the power to make signs and labels in the colours and shapes you need to make an impact – right at your own facility and right when you need them. With remarkable multi-colour printing, versatile shape-cutting capabilities and impressively fast print speeds, you'll never know how you lived without one of these printers.

Faster. Easier. More Versatile. Expect Nothing Less!



Multiple Print Colours

- Print signs and labels that are more noticeable, more memorable and more effective
- Colour is the differentiator when you need to effectively improve workplace safety and productivity



Shape Cutting

- Revolutionary built-in XY plotter-cutter system in the BBP37 printer
- Cut out shapes and text, or cut around your message to create labels that look and fit just how you want them to



Label Making Made Easy

- Incredibly easy and intuitive so anyone can walk up and print labels
- Ideal for multiple users, centralised locations and lean/5S events
- Compatible with powerful Brady Workstation Label Apps for added versatility



Improved Workplace



Automatic Label Setup

- Printers read critical information from the supply cartridge and then automatically set up the label attributes so you can start printing immediately
- No more calibration or wasted labels, no print speed/burn temperature trial labels, no scrolling through screens to select a label and no wasted time setting up label dimensions or text size

20-second Material Changeovers

- “Drop in” ribbons and labels mean no complicated threading, assembling spindles, sensor adjustment or calibration steps
- You can get on with the job faster, giving you more time for other tasks

5 Inches per Second Print Speed

- Fast processing time and print speed means you don't have to wait around for your labels



BBP[®]37
COLOR & CUT
SIGN & LABEL PRINTER

BBP[®]35
MULTICOLOR SIGN & LABEL PRINTER

Table of Contents

Facility & Safety ID

Pre-Printed GHS Chemical Labels	5
Indoor/Outdoor Vinyl	6
Low-Halide Polyester.....	7
Pre-Printed Pre-Cut Blank Sign Headers	8
Non-Adhesive Tags	8
ToughWash [®] Washdown Resistant Labels.....	9
Printable Magnetic Supply	9
ToughStripe [®] Printable Floor Tape.....	10
Repositionable Vinyl.....	10
Retro Reflective Labels	11
BradyGlo Photoluminescent Tape.....	11
Cold Temperature Material.....	11
Circle Gauge Labels	12
Gradient "Ruler" Labels	12
Arc Flash Labels	13
Make Your Own Rigid Valve Tags.....	13
Blank Rigid Panels.....	14
Product ID Materials	15
Tamper-Evident Asset ID Labels	15
Raised Profile Labels (Rectangular).....	16
Raised Profile Labels (Push Button)	17

Print Ribbons 18-19

Software..... 20

What Is Visual Workplace..... 21

Why DIY Labelling..... 22

Printers & Accessories..... 23-24




Legendary Material Performance

- Brady labels are reliable and durable because we design labels in our own facilities and put them through rigorous R&D tests and trials before they're ready for use
- Nothing leaves our doors without meeting our standards
- Some last up to 10 years outdoors. Stick to rough surfaces or smooth; dirty surfaces or clean; in harsh conditions or normal conditions. With that kind of reliability, you'll only need to make these labels once

Options. Lots of Options

- Print pipe labels, GHS chemical labels, labels that glow in the dark and labels that aren't even labels at all (they're tags!)
- With over 300 parts in all, you can label it all!
- Any "B30" label or ribbon supply is compatible for use in BBP®35 and BBP®37 sign and label printers, if it was manufactured after September 1, 2015

 This icon indicates that a particular part can be XY-Plotter cuttable in the BBP37 printer model. Shapes and 19.05mm or taller text can be cut from these materials.



Pre-Printed GHS Chemical Labels (B-7569)

- Blank labels with pre-printed red diamonds allow the printer to produce 2-colour GHS labels in one print pass
- 3 sizes of labels, each with 6 diamond layouts that match templates in the Brady Workstation GHS App
- Indoor/outdoor vinyl material and durable inks withstand exposure to moisture, chemicals and handling
- You can also make GHS labels with white tape and black/red ribbon to reduce your supply inventory

Service Temp: -20°C to 82°C Application Temp: 10°C to 82°C
Average Outdoor Durability: 3-5 years



Part No.	Fits Printer Model(s)	Reference	B#	Material	Legend	Label Height (mm)	Label Width (mm)	Labels Per Row	Labels Per Roll	Rec. Ribbon
121633	BBP37,35, 31, 33	B30-260-7569-CLP1	B-7569	Vinyl		55	85	1	340	B30-R10000
121639	BBP37,35, 31, 33	B30-261-7569-CLP1	B-7569	Vinyl		75	110	1	270	B30-R10000
121645	BBP37,35, 31, 33	B30-262-7569-CLP1	B-7569	Vinyl		105	155	1	200	B30-R10000
121634	BBP37,35, 31, 33	B30-260-7569-CLP2	B-7569	Vinyl		55	85	1	340	B30-R10000
121640	BBP37,35, 31, 33	B30-261-7569-CLP2	B-7569	Vinyl		75	110	1	270	B30-R10000
121646	BBP37,35, 31, 33	B30-262-7569-CLP2	B-7569	Vinyl		105	155	1	200	B30-R10000
121635	BBP37,35, 31, 33	B30-260-7569-CLP3A	B-7569	Vinyl		55	85	1	340	B30-R10000
121641	BBP37,35, 31, 33	B30-261-7569-CLP3A	B-7569	Vinyl		75	110	1	270	B30-R10000
121647	BBP37,35, 31, 33	B30-262-7569-CLP3A	B-7569	Vinyl		105	155	1	200	B30-R10000
121636	BBP37,35, 31, 33	B30-260-7569-CLP3B	B-7569	Vinyl		55	85	1	340	B30-R10000
121642	BBP37,35, 31, 33	B30-261-7569-CLP3B	B-7569	Vinyl		75	110	1	270	B30-R10000
121648	BBP37,35, 31, 33	B30-262-7569-CLP3B	B-7569	Vinyl		105	155	1	200	B30-R10000
121637	BBP37,35, 31, 33	B30-260-7569-CLP4A	B-7569	Vinyl		55	85	1	340	B30-R10000
121643	BBP37,35, 31, 33	B30-261-7569-CLP4A	B-7569	Vinyl		75	110	1	270	B30-R10000
121649	BBP37,35, 31, 33	B30-262-7569-CLP4A	B-7569	Vinyl		105	155	1	200	B30-R10000
121638	BBP37,35, 31, 33	B30-260-7569-CLP4B	B-7569	Vinyl		55	85	1	340	B30-R10000
121644	BBP37,35, 31, 33	B30-261-7569-CLP4B	B-7569	Vinyl		75	110	1	270	B30-R10000
121650	BBP37,35, 31, 33	B30-262-7569-CLP4B	B-7569	Vinyl		105	155	1	200	B30-R10000



Brady WorkStation has a GHS Label App!

- Built-in pre-formatted label layouts and approved GHS symbols
- Pre-worded hazard statements and GHS symbols that just click and drag into the layout (no need to type everything in)
- Once you create a label, the data is there and you can print any size with only a single click
- Automatic "block-out" of unused diamonds on pre-printed supplies so you can inventory fewer label rolls
- No driver needed when connected to a Brady BBP®35, 37, 31, 33 or 85 printer



Indoor/Outdoor Vinyl (B-595)

- For general facility and safety identification: Our best industrial vinyl yet
- Durable, low-shrink vinyl with our most aggressive adhesive
- Conforms to irregular, curved, rough and highly textured surfaces (painted cinder blocks, uneven wood, textured plastics, paper-jacketed pipes, powder-coated surfaces)
- Adheres to “difficult” low-surface energy items (PVC piping, blow-molded equipment cases, ABS plastics, recycled plastics)



Facility and Safety Applications:

- 5S Labels
- Pipe Markers
- Safety & Warning Labels
- Equipment & Panel Labels
- Arc Flash & Chemical Labels
- And More!

Service Temp: -20°C to 82°C Application Temp: -18°C to 82°C
 Average Outdoor Durability: 8-10 year outdoor vinyl label durability.
 Agency approvals: **RoHS**

Part No.	Fits Printer Model(s)	Diagram	Reference	B#	Colour	Label Width A (mm)	Roll Length B (m)	Labels Per Roll	Rec. Ribbon
142031	BBP37,35, 31, 33	Fig. 33	B30C-500-595-WT	B-595	White	12.7	30.48	1 roll (cont.)	B30-R10000
142030	BBP37,35, 31, 33	Fig. 33	B30C-1125-595-WT	B-595	White	28.58	30.48	1 roll (cont.)	B30-R10000
142029	BBP37,35, 31, 33	Fig. 33	B30C-2250-595-WT	B-595	White	57.15	30.48	1 roll (cont.)	B30-R10000
142028	BBP37,35, 31, 33	Fig. 33	B30C-3000-595-WT	B-595	White	76.2	30.48	1 roll (cont.)	B30-R10000
142027	BBP37,35, 31, 33	Fig. 33	B30C-4000-595-WT	B-595	White	101.6	30.48	1 roll (cont.)	B30-R10000
142036	BBP37,35, 31, 33	Fig. 33	B30C-500-595-YL	B-595	Yellow	12.7	30.48	1 roll (cont.)	B30-R10000
142035	BBP37,35, 31, 33	Fig. 33	B30C-1125-595-YL	B-595	Yellow	28.58	30.48	1 roll (cont.)	B30-R10000
142034	BBP37,35, 31, 33	Fig. 33	B30C-2250-595-YL	B-595	Yellow	57.15	30.48	1 roll (cont.)	B30-R10000
142033	BBP37,35, 31, 33	Fig. 33	B30C-3000-595-YL	B-595	Yellow	76.2	30.48	1 roll (cont.)	B30-R10000
142032	BBP37,35, 31, 33	Fig. 33	B30C-4000-595-YL	B-595	Yellow	101.6	30.48	1 roll (cont.)	B30-R10000
142026	BBP37,35, 31, 33	Fig. 33	B30C-500-595-RD	B-595	Red	12.7	30.48	1 roll (cont.)	B30-R10000-WT
142025	BBP37,35, 31, 33	Fig. 33	B30C-1125-595-RD	B-595	Red	28.58	30.48	1 roll (cont.)	B30-R10000-WT
142024	BBP37,35, 31, 33	Fig. 33	B30C-2250-595-RD	B-595	Red	57.15	30.48	1 roll (cont.)	B30-R10000-WT
142023	BBP37,35, 31, 33	Fig. 33	B30C-4000-595-RD	B-595	Red	101.6	30.48	1 roll (cont.)	B30-R10000-WT
141994	BBP37,35, 31, 33	Fig. 33	B30C-500-595-BL	B-595	Blue	12.7	30.48	1 roll (cont.)	B30-R10000-WT
141993	BBP37,35, 31, 33	Fig. 33	B30C-1125-595-BL	B-595	Blue	28.58	30.48	1 roll (cont.)	B30-R10000-WT
141992	BBP37,35, 31, 33	Fig. 33	B30C-2250-595-BL	B-595	Blue	57.15	30.48	1 roll (cont.)	B30-R10000-WT
141991	BBP37,35, 31, 33	Fig. 33	B30C-4000-595-BL	B-595	Blue	101.6	30.48	1 roll (cont.)	B30-R10000-WT
142010	BBP37,35, 31, 33	Fig. 33	B30C-500-595-GN	B-595	Green	12.7	30.48	1 roll (cont.)	B30-R10000-WT
142009	BBP37,35, 31, 33	Fig. 33	B30C-1125-595-GN	B-595	Green	28.58	30.48	1 roll (cont.)	B30-R10000-WT
142008	BBP37,35, 31, 33	Fig. 33	B30C-2250-595-GN	B-595	Green	57.15	30.48	1 roll (cont.)	B30-R10000-WT
142007	BBP37,35, 31, 33	Fig. 33	B30C-4000-595-GN	B-595	Green	101.6	30.48	1 roll (cont.)	B30-R10000-WT
142018	BBP37,35, 31, 33	Fig. 33	B30C-500-595-OR	B-595	Orange	12.7	30.48	1 roll (cont.)	B30-R10000
142017	BBP37,35, 31, 33	Fig. 33	B30C-1125-595-OR	B-595	Orange	28.58	30.48	1 roll (cont.)	B30-R10000
142016	BBP37,35, 31, 33	Fig. 33	B30C-2250-595-OR	B-595	Orange	57.15	30.48	1 roll (cont.)	B30-R10000
142015	BBP37,35, 31, 33	Fig. 33	B30C-4000-595-OR	B-595	Orange	101.6	30.48	1 roll (cont.)	B30-R10000
141990	BBP37,35, 31, 33	Fig. 33	B30C-500-595-BK	B-595	Black	12.7	30.48	1 roll (cont.)	B30-R10000-WT
141989	BBP37,35, 31, 33	Fig. 33	B30C-1125-595-BK	B-595	Black	28.58	30.48	1 roll (cont.)	B30-R10000-WT
141988	BBP37,35, 31, 33	Fig. 33	B30C-2250-595-BK	B-595	Black	57.15	30.48	1 roll (cont.)	B30-R10000-WT
141987	BBP37,35, 31, 33	Fig. 33	B30C-4000-595-BK	B-595	Black	101.6	30.48	1 roll (cont.)	B30-R10000-WT
141998	BBP37,35, 31, 33	Fig. 33	B30C-500-595-BR	B-595	Brown	12.7	30.48	1 roll (cont.)	B30-R10000-WT
141997	BBP37,35, 31, 33	Fig. 33	B30C-1125-595-BR	B-595	Brown	28.58	30.48	1 roll (cont.)	B30-R10000-WT
141996	BBP37,35, 31, 33	Fig. 33	B30C-2250-595-BR	B-595	Brown	57.15	30.48	1 roll (cont.)	B30-R10000-WT
141995	BBP37,35, 31, 33	Fig. 33	B30C-4000-595-BR	B-595	Brown	101.6	30.48	1 roll (cont.)	B30-R10000-WT
142006	BBP37,35, 31, 33	Fig. 33	B30C-500-595-GD	B-595	Gold	12.7	30.48	1 roll (cont.)	B30-R10000
142005	BBP37,35, 31, 33	Fig. 33	B30C-1125-595-GD	B-595	Gold	28.58	30.48	1 roll (cont.)	B30-R10000
142004	BBP37,35, 31, 33	Fig. 33	B30C-2250-595-GD	B-595	Gold	57.15	30.48	1 roll (cont.)	B30-R10000
142003	BBP37,35, 31, 33	Fig. 33	B30C-4000-595-GD	B-595	Gold	101.6	30.48	1 roll (cont.)	B30-R10000
142014	BBP37,35, 31, 33	Fig. 33	B30C-500-595-GY	B-595	Gray	12.7	30.48	1 roll (cont.)	B30-R10000
142013	BBP37,35, 31, 33	Fig. 33	B30C-1125-595-GY	B-595	Gray	28.58	30.48	1 roll (cont.)	B30-R10000
142012	BBP37,35, 31, 33	Fig. 33	B30C-2250-595-GY	B-595	Gray	57.15	30.48	1 roll (cont.)	B30-R10000
142011	BBP37,35, 31, 33	Fig. 33	B30C-4000-595-GY	B-595	Gray	101.6	30.48	1 roll (cont.)	B30-R10000
142022	BBP37,35, 31, 33	Fig. 33	B30C-500-595-PL	B-595	Purple	12.7	30.48	1 roll (cont.)	B30-R10000-WT
142021	BBP37,35, 31, 33	Fig. 33	B30C-1125-595-PL	B-595	Purple	28.58	30.48	1 roll (cont.)	B30-R10000-WT
142020	BBP37,35, 31, 33	Fig. 33	B30C-2250-595-PL	B-595	Purple	57.15	30.48	1 roll (cont.)	B30-R10000-WT
142019	BBP37,35, 31, 33	Fig. 33	B30C-4000-595-PL	B-595	Purple	101.6	30.48	1 roll (cont.)	B30-R10000-WT
142002	BBP37,35, 31, 33	Fig. 33	B30C-500-595-CL	B-595	Clear	12.7	30.48	1 roll (cont.)	B30-R10000
142001	BBP37,35, 31, 33	Fig. 33	B30C-1125-595-CL	B-595	Clear	28.58	30.48	1 roll (cont.)	B30-R10000
142000	BBP37,35, 31, 33	Fig. 33	B30C-2250-595-CL	B-595	Clear	57.15	30.48	1 roll (cont.)	B30-R10000
141999	BBP37,35, 31, 33	Fig. 33	B30C-4000-595-CL	B-595	Clear	101.6	30.48	1 roll (cont.)	B30-R10000

U.S. Patent Nos. 5,823,689; 6,570,602. Additional Patents Pending.

Low-Halide Polyester (B-569)

- Low-halide content for labelling stainless steel pipes and surfaces
- Applies best to very smooth surfaces and ideal for mounting to rigid panels

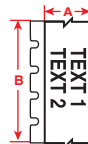


Figure 33



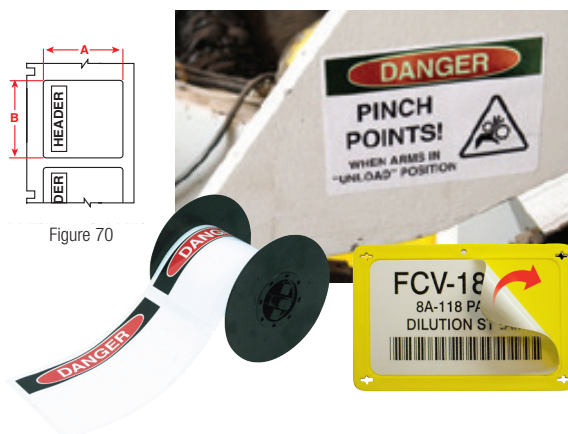
Service Temp: -40°C to 100°C Application Temp: -18°C to 100°C
Average Outdoor Durability: 3-5 years

Part No.	Fits Printer Model(s)	Diagram	Reference	B#	Colour	Label Width A (mm)	Roll Length B (m)	Labels Per Roll	Rec. Ribbon
117989	BBP37,35,31,33	Fig. 33	B30C-500-569-WT	B-569	White	12.7	30.48	1 roll (cont.)	B30-R10000
117988	BBP37,35,31,33	Fig. 33	B30C-1125-569-WT	B-569	White	28.58	30.48	1 roll (cont.)	B30-R10000
117987	BBP37,35,31,33	Fig. 33	B30C-2250-569-WT	B-569	White	57.15	30.48	1 roll (cont.)	B30-R10000
117986	BBP37,35,31,33	Fig. 33	B30C-3000-569-WT	B-569	White	76.2	30.48	1 roll (cont.)	B30-R10000
117985	BBP37,35,31,33	Fig. 33	B30C-4000-569-WT	B-569	White	101.6	30.48	1 roll (cont.)	B30-R10000
117993	BBP37,35,31,33	Fig. 33	B30C-500-569-YL	B-569	Yellow	12.7	30.48	1 roll (cont.)	B30-R10000
117992	BBP37,35,31,33	Fig. 33	B30C-1125-569-YL	B-569	Yellow	28.58	30.48	1 roll (cont.)	B30-R10000
117991	BBP37,35,31,33	Fig. 33	B30C-2250-569-YL	B-569	Yellow	57.15	30.48	1 roll (cont.)	B30-R10000
117990	BBP37,35,31,33	Fig. 33	B30C-4000-569-YL	B-569	Yellow	101.6	30.48	1 roll (cont.)	B30-R10000
117976	BBP37,35,31,33	Fig. 33	B30C-500-569-RD	B-569	Red	12.7	30.48	1 roll (cont.)	B30-R10000-WT
117975	BBP37,35,31,33	Fig. 33	B30C-1125-569-RD	B-569	Red	28.58	30.48	1 roll (cont.)	B30-R10000-WT
117974	BBP37,35,31,33	Fig. 33	B30C-2250-569-RD	B-569	Red	57.15	30.48	1 roll (cont.)	B30-R10000-WT
117973	BBP37,35,31,33	Fig. 33	B30C-4000-569-RD	B-569	Red	101.6	30.48	1 roll (cont.)	B30-R10000-WT
117936	BBP37,35,31,33	Fig. 33	B30C-500-569-BL	B-569	Blue	12.7	30.48	1 roll (cont.)	B30-R10000-WT
117935	BBP37,35,31,33	Fig. 33	B30C-1125-569-BL	B-569	Blue	28.58	30.48	1 roll (cont.)	B30-R10000-WT
117934	BBP37,35,31,33	Fig. 33	B30C-2250-569-BL	B-569	Blue	57.15	30.48	1 roll (cont.)	B30-R10000-WT
117933	BBP37,35,31,33	Fig. 33	B30C-4000-569-BL	B-569	Blue	101.6	30.48	1 roll (cont.)	B30-R10000-WT
117956	BBP37,35,31,33	Fig. 33	B30C-500-569-LB	B-569	Light Blue	12.7	30.48	1 roll (cont.)	B30-R10000
117955	BBP37,35,31,33	Fig. 33	B30C-1125-569-LB	B-569	Light Blue	28.58	30.48	1 roll (cont.)	B30-R10000
117954	BBP37,35,31,33	Fig. 33	B30C-2250-569-LB	B-569	Light Blue	57.15	30.48	1 roll (cont.)	B30-R10000
117953	BBP37,35,31,33	Fig. 33	B30C-4000-569-LB	B-569	Light Blue	101.6	30.48	1 roll (cont.)	B30-R10000
117980	BBP37,35,31,33	Fig. 33	B30C-500-569-SB	B-569	Sky Blue	12.7	30.48	1 roll (cont.)	B30-R10000
117979	BBP37,35,31,33	Fig. 33	B30C-1125-569-SB	B-569	Sky Blue	28.58	30.48	1 roll (cont.)	B30-R10000
117978	BBP37,35,31,33	Fig. 33	B30C-2250-569-SB	B-569	Sky Blue	57.15	30.48	1 roll (cont.)	B30-R10000
117977	BBP37,35,31,33	Fig. 33	B30C-4000-569-SB	B-569	Sky Blue	101.6	30.48	1 roll (cont.)	B30-R10000
117948	BBP37,35,31,33	Fig. 33	B30C-500-569-GN	B-569	Green	12.7	30.48	1 roll (cont.)	B30-R10000-WT
117947	BBP37,35,31,33	Fig. 33	B30C-1125-569-GN	B-569	Green	28.58	30.48	1 roll (cont.)	B30-R10000-WT
117946	BBP37,35,31,33	Fig. 33	B30C-2250-569-GN	B-569	Green	57.15	30.48	1 roll (cont.)	B30-R10000-WT
117945	BBP37,35,31,33	Fig. 33	B30C-4000-569-GN	B-569	Green	101.6	30.48	1 roll (cont.)	B30-R10000-WT
117964	BBP37,35,31,33	Fig. 33	B30C-500-569-OR	B-569	Orange	12.7	30.48	1 roll (cont.)	B30-R10000
117963	BBP37,35,31,33	Fig. 33	B30C-1125-569-OR	B-569	Orange	28.58	30.48	1 roll (cont.)	B30-R10000
117962	BBP37,35,31,33	Fig. 33	B30C-2250-569-OR	B-569	Orange	57.15	30.48	1 roll (cont.)	B30-R10000
117961	BBP37,35,31,33	Fig. 33	B30C-4000-569-OR	B-569	Orange	101.6	30.48	1 roll (cont.)	B30-R10000
117932	BBP37,35,31,33	Fig. 33	B30C-500-569-BK	B-569	Black	12.7	30.48	1 roll (cont.)	B30-R10000-WT
117931	BBP37,35,31,33	Fig. 33	B30C-1125-569-BK	B-569	Black	28.58	30.48	1 roll (cont.)	B30-R10000-WT
117930	BBP37,35,31,33	Fig. 33	B30C-2250-569-BK	B-569	Black	57.15	30.48	1 roll (cont.)	B30-R10000-WT
117929	BBP37,35,31,33	Fig. 33	B30C-4000-569-BK	B-569	Black	101.6	30.48	1 roll (cont.)	B30-R10000-WT
117940	BBP37,35,31,33	Fig. 33	B30C-500-569-BR	B-569	Brown	12.7	30.48	1 roll (cont.)	B30-R10000-WT
117939	BBP37,35,31,33	Fig. 33	B30C-1125-569-BR	B-569	Brown	28.58	30.48	1 roll (cont.)	B30-R10000-WT
117938	BBP37,35,31,33	Fig. 33	B30C-2250-569-BR	B-569	Brown	57.15	30.48	1 roll (cont.)	B30-R10000-WT
117937	BBP37,35,31,33	Fig. 33	B30C-4000-569-BR	B-569	Brown	101.6	30.48	1 roll (cont.)	B30-R10000-WT
117960	BBP37,35,31,33	Fig. 33	B30C-500-569-OC	B-569	Ochre	12.7	30.48	1 roll (cont.)	B30-R10000
117959	BBP37,35,31,33	Fig. 33	B30C-1125-569-OC	B-569	Ochre	28.58	30.48	1 roll (cont.)	B30-R10000
117958	BBP37,35,31,33	Fig. 33	B30C-2250-569-OC	B-569	Ochre	57.15	30.48	1 roll (cont.)	B30-R10000
117957	BBP37,35,31,33	Fig. 33	B30C-4000-569-OC	B-569	Ochre	101.6	30.48	1 roll (cont.)	B30-R10000
117984	BBP37,35,31,33	Fig. 33	B30C-500-569-TN	B-569	Tan	12.7	30.48	1 roll (cont.)	B30-R10000
117983	BBP37,35,31,33	Fig. 33	B30C-1125-569-TN	B-569	Tan	28.58	30.48	1 roll (cont.)	B30-R10000
117982	BBP37,35,31,33	Fig. 33	B30C-2250-569-TN	B-569	Tan	57.15	30.48	1 roll (cont.)	B30-R10000
117981	BBP37,35,31,33	Fig. 33	B30C-4000-569-TN	B-569	Tan	101.6	30.48	1 roll (cont.)	B30-R10000
117952	BBP37,35,31,33	Fig. 33	B30C-500-569-GY	B-569	Gray	12.7	30.48	1 roll (cont.)	B30-R10000
117951	BBP37,35,31,33	Fig. 33	B30C-1125-569-GY	B-569	Gray	28.58	30.48	1 roll (cont.)	B30-R10000
117950	BBP37,35,31,33	Fig. 33	B30C-2250-569-GY	B-569	Gray	57.15	30.48	1 roll (cont.)	B30-R10000
117949	BBP37,35,31,33	Fig. 33	B30C-4000-569-GY	B-569	Gray	101.6	30.48	1 roll (cont.)	B30-R10000
117972	BBP37,35,31,33	Fig. 33	B30C-500-569-PL	B-569	Purple	12.7	30.48	1 roll (cont.)	B30-R10000-WT
117971	BBP37,35,31,33	Fig. 33	B30C-1125-569-PL	B-569	Purple	28.58	30.48	1 roll (cont.)	B30-R10000-WT
117970	BBP37,35,31,33	Fig. 33	B30C-2250-569-PL	B-569	Purple	57.15	30.48	1 roll (cont.)	B30-R10000-WT
117969	BBP37,35,31,33	Fig. 33	B30C-4000-569-PL	B-569	Purple	101.6	30.48	1 roll (cont.)	B30-R10000-WT
117968	BBP37,35,31,33	Fig. 33	B30C-500-569-PK	B-569	Pink	12.7	30.48	1 roll (cont.)	B30-R10000
117967	BBP37,35,31,33	Fig. 33	B30C-1125-569-PK	B-569	Pink	28.58	30.48	1 roll (cont.)	B30-R10000
117966	BBP37,35,31,33	Fig. 33	B30C-2250-569-PK	B-569	Pink	57.15	30.48	1 roll (cont.)	B30-R10000
117965	BBP37,35,31,33	Fig. 33	B30C-4000-569-PK	B-569	Pink	101.6	30.48	1 roll (cont.)	B30-R10000
117944	BBP37,35,31,33	Fig. 33	B30C-500-569-CL	B-569	Clear	12.7	30.48	1 roll (cont.)	B30-R10000
117943	BBP37,35,31,33	Fig. 33	B30C-1125-569-CL	B-569	Clear	28.58	30.48	1 roll (cont.)	B30-R10000
117942	BBP37,35,31,33	Fig. 33	B30C-2250-569-CL	B-569	Clear	57.15	30.48	1 roll (cont.)	B30-R10000
117941	BBP37,35,31,33	Fig. 33	B30C-4000-569-CL	B-569	Clear	101.6	30.48	1 roll (cont.)	B30-R10000

Pre-Printed Pre-Cut Blank Sign Headers (B-595)

- Allows printer to create multicolour signs fast - in a single print pass
- Headers meet AS 1319 standard for Danger and Warning signs
- Indoor/outdoor grade material conforms to rough, highly textured and “difficult to adhere to” surfaces

Service Temp: -40°C to 82°C Application Temp: -18°C to 82°C
 Average Outdoor Durability: 8-10 years
 Agency Approvals: **RoHS**



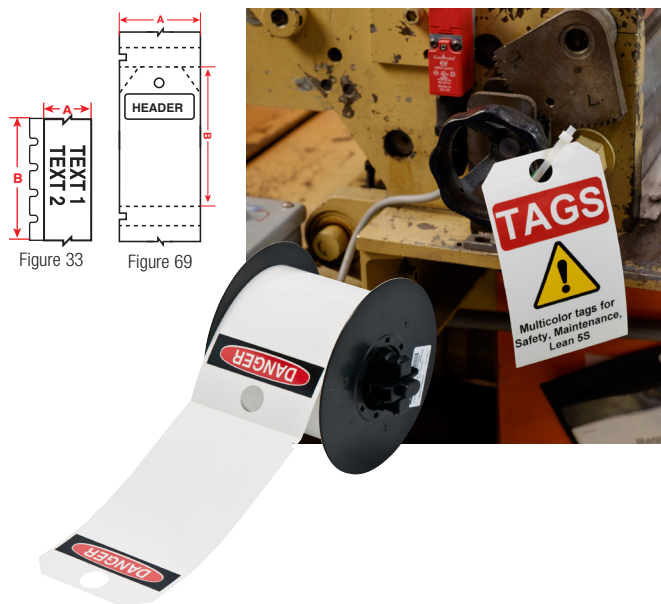
Part No.	Fits Printer Model(s)	Diagram	B#	Material	Header	Label Height A (mm)	Label Width B (mm)	Labels Per Row	Labels Per Roll	Rec. Ribbon
142191	BBP37,35, 31, 33	Fig. 70	B-595	Vinyl		57.5	76.2	1	300	B30-R10000
142190	BBP37,35, 31, 33	Fig. 70	B-595	Vinyl		101.6	152.4	1	175	B30-R10000
872946	BBP37,35, 31, 33	Fig. 70	B-595	Vinyl		57.5	76.2	1	300	B30-R10000
872948	BBP37,35, 31, 33	Fig. 70	B-595	Vinyl		101.6	152.4	1	175	B30-R10000
142189	BBP37,35, 31, 33	Fig. 70	B-595	Vinyl		57.5	76.2	1	300	B30-R10000
142188	BBP37,35, 31, 33	Fig. 70	B-595	Vinyl		101.6	152.4	1	175	B30-R10000
142196	BBP37,35, 31, 33	Fig. 70	B-595	Vinyl		28.6*	72.4	1	300	B30-R10000
142195	BBP37,35, 31, 33	Fig. 70	B-595	Vinyl		57.5	76.2	1	300	B30-R10000
142197	BBP37,35, 31, 33	Fig. 70	B-595	Vinyl		57.5*	97.8	1	250	B30-R10000
142194	BBP37,35, 31, 33	Fig. 70	B-595	Vinyl		101.6	152.4	1	175	B30-R10000
142199	BBP37,35, 31, 33	Fig. 70	B-595	Vinyl		57.5	76.2	1	300	B30-R10000
142198	BBP37,35, 31, 33	Fig. 70	B-595	Vinyl		101.6	152.4	1	175	B30-R10000

*Label pre-sized to fit blank rigid valve tags, but can also be used on its own as general purpose label. See page 13 for details on Valve Tags.

Non-Adhesive Tags (B-551)

- Non-adhesive semi-rigid card stock in pre-cut and continuous styles
- Tags are pre-cut with hole or easy to hole-punch, are micro-perforated between tags to separate cleanly, and some feature chamfered corners
- Snap-in plastic grommets available for extra strength around mounting hole (Part #20596, 100/ bag)

Service Temp: -40°C to 89°C
 Average Outdoor Durability: Up to 2 years

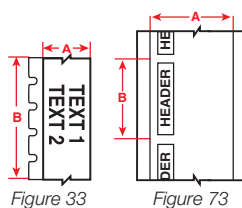


Part No.	Fits Printer Model(s)	Diagram	Reference	B#	Header	Tag Width A (mm)	Tag Height B (mm)	Tags Per Row	Tags Per Roll	Rec. Ribbon
142223	BBP37,35, 31, 33	Fig. 69	B30-255-551-OSHADA	B-551		82.6	146.1	1	100	B30-R10000
142226	BBP37,35, 31, 33	Fig. 69	B30-255-551-WHT	B-551		82.6	146.1	1	100	B30-R10000
118103	BBP37,35, 31, 33	Fig. 33	B30C-2500-551-WT	B-551		63.5	15.2m	1	1 roll (cont.)	B30-R10000
118012	BBP37,35, 31, 33	Fig. 33	B30C-3250-551-WT	B-551		82.6	15.2m	1	1 roll (cont.)	B30-R10000
118011	BBP37,35, 31, 33	Fig. 33	B30C-4250-551-WT	B-551		107.9	15.2m	1	1 roll (cont.)	B30-R10000

ToughWash® Washdown Resistant Labels (B-854, B-855)

- Withstands high pressure, heat, harsh chemicals and numerous washdown cycles
- B-854 offers metal detectable layer to detect foreign debris in food stream
- Legible and long-lasting for even the toughest washdown cycles
- Ideal for use in the food & beverage industry

Service Temp: -40°C to 110°C
Agency approvals: **RoHS**

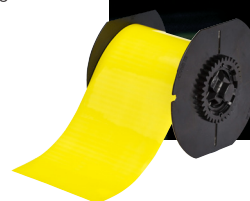


Part No.	Fits Printer Model(s)	Diagram	Reference	B#	Colour	Label Width A (mm)	Length B (m)	Labels Per Roll	Rec. Ribbon
B-854 ToughWash™ Metal Detectable Material									
133120	BBP37,35, 31, 33	Fig. 33	B30C-4000-854-WT	B-854		101.6	15.2	1 roll (cont.)	B30-R6000
133119	BBP37,35, 31, 33	Fig. 33	B30C-4000-854-YL	B-854		101.6	15.2	1 roll (cont.)	B30-R6000
139804	BBP37,35, 31, 33	Fig. 73	B30-25-854-OSHADA	B-854		101.6	158.75mm	100	B30-R6000
B-855 ToughWash™ Material									
133147	BBP37,35, 31, 33	Fig. 33	B30C-1125-855-WT	B-855		28.57	15.2	1 roll (cont.)	B30-R6000
133143	BBP37,35, 31, 33	Fig. 33	B30C-2250-855-WT	B-855		57.15	15.2	1 roll (cont.)	B30-R6000
133145	BBP37,35, 31, 33	Fig. 33	B30C-4000-855-WT	B-855		101.6	15.2	1 roll (cont.)	B30-R6000
133146	BBP37,35, 31, 33	Fig. 33	B30C-1125-855-YL	B-855		28.57	15.2	1 roll (cont.)	B30-R6000
133142	BBP37,35, 31, 33	Fig. 33	B30C-2250-855-YL	B-855		57.15	15.2	1 roll (cont.)	B30-R6000
133144	BBP37,35, 31, 33	Fig. 33	B30C-4000-855-YL	B-855		101.6	15.2	1 roll (cont.)	B30-R6000
139803	BBP37,35, 31, 33	Fig. 73	B30C-4000-855-DANG	B-855		101.6	158.75mm	100	B30-R6000

Printable Magnetic Supply (B-509)

- Easiest and quickest material for removing and repositioning
- Non-adhesive magnetic material that can be printed on directly
- Ideal for reusable, repositionable, and lean / 5S identification applications


Service Temp: -18°C to 70°C
Average Outdoor Durability: 3 to 5 years



Part No.	Fits Printer Model(s)	Diagram	Reference	B#	Colour	Label Width A (mm)	Roll Length B (m)	Labels Per Roll	Rec. Ribbon
117917	BBP37,35, 31, 33	Fig. 33	B30C-2500-509-WT	B-509	White	63.5	7.62	1 roll (cont.)	B30-R10000
117916	BBP37,35, 31, 33	Fig. 33	B30C-4250-509-WT	B-509	White	107.8	7.62	1 roll (cont.)	B30-R10000
117919	BBP37,35, 31, 33	Fig. 33	B30C-2500-509-YL	B-509	Yellow	63.5	7.62	1 roll (cont.)	B30-R10000
117918	BBP37,35, 31, 33	Fig. 33	B30C-4250-509-YL	B-509	Yellow	107.8	7.62	1 roll (cont.)	B30-R10000

ToughStripe® Printable Floor Marking Tape (B-483 with overlamine)

- Revolutionary new B-483 material has ultra aggressive adhesive
- Withstands forklift and pallet jack traffic without tearing or lifting
- Easy 3-step process: print label, position on floor, apply overlamine
- Each roll ships with a roll of clear overlamine which must be applied over printed label and onto appropriate surface for best performance

Service Temp: -40°C to 120°C
Agency Approvals:  

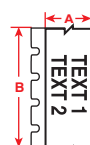
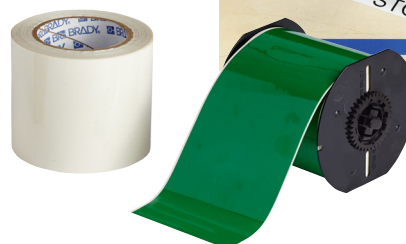


Figure 33



Part No.	Fits Printer Model(s)	Diagram	Reference	B#	Colour	Label Width A Inch (mm)	Roll Length B Feet (m)	Labels Per Roll	Rec. Ribbon
139950	BBP37,35	Fig. 33	B30C-1125-483WT-KT	B-483	White	28.6	30.48	1 Roll (cont.)	B30-R6000
139949	BBP37,35	Fig. 33	B30C-2250-483WT-KT	B-483	White	57.5	30.48	1 Roll (cont.)	B30-R6000
139948	BBP37,35	Fig. 33	B30C-3000-483WT-KT	B-483	White	76.2	30.48	1 Roll (cont.)	B30-R6000
139947	BBP37,35	Fig. 33	B30C-4000-483WT-KT	B-483	White	101.6	30.48	1 Roll (cont.)	B30-R6000
139946	BBP37,35	Fig. 33	B30C-1125-483YL-KT	B-483	Yellow	28.6	30.48	1 Roll (cont.)	B30-R6000
139945	BBP37,35	Fig. 33	B30C-2250-483YL-KT	B-483	Yellow	57.5	30.48	1 Roll (cont.)	B30-R6000
139944	BBP37,35	Fig. 33	B30C-3000-483YL-KT	B-483	Yellow	76.2	30.48	1 Roll (cont.)	B30-R6000
139943	BBP37,35	Fig. 33	B30C-4000-483YL-KT	B-483	Yellow	101.6	30.48	1 Roll (cont.)	B30-R6000
139942	BBP37,35	Fig. 33	B30C-1125-483RD-KT	B-483	Red	28.6	30.48	1 Roll (cont.)	B30-R4400-WT
139941	BBP37,35	Fig. 33	B30C-2250-483RD-KT	B-483	Red	57.5	30.48	1 Roll (cont.)	B30-R4400-WT
139940	BBP37,35	Fig. 33	B30C-4000-483RD-KT	B-483	Red	101.6	30.48	1 Roll (cont.)	B30-R4400-WT
139939	BBP37,35	Fig. 33	B30C-1125-483BL-KT	B-483	Blue	28.6	30.48	1 Roll (cont.)	B30-R4400-WT
139938	BBP37,35	Fig. 33	B30C-2250-483BL-KT	B-483	Blue	57.5	30.48	1 Roll (cont.)	B30-R4400-WT
139937	BBP37,35	Fig. 33	B30C-4000-483BL-KT	B-483	Blue	101.6	30.48	1 Roll (cont.)	B30-R4400-WT
139936	BBP37,35	Fig. 33	B30C-1125-483GN-KT	B-483	Green	28.6	30.48	1 Roll (cont.)	B30-R4400-WT
139935	BBP37,35	Fig. 33	B30C-2250-483GN-KT	B-483	Green	57.5	30.48	1 Roll (cont.)	B30-R4400-WT
139934	BBP37,35	Fig. 33	B30C-4000-483GN-KT	B-483	Green	101.6	30.48	1 Roll (cont.)	B30-R4400-WT
139933	BBP37,35	Fig. 33	B30C-1125-483BK-KT	B-483	Black	28.6	30.48	1 Roll (cont.)	B30-R4400-WT
139932	BBP37,35	Fig. 33	B30C-2250-483BK-KT	B-483	Black	57.5	30.48	1 Roll (cont.)	B30-R4400-WT
139931	BBP37,35	Fig. 33	B30C-4000-483BK-KT	B-483	Black	101.6	30.48	1 Roll (cont.)	B30-R4400-WT
139930	BBP37,35	Fig. 33	B30C-1125-483OR-KT	B-483	Orange	28.6	30.48	1 Roll (cont.)	B30-R6000
139929	BBP37,35	Fig. 33	B30C-2250-483OR-KT	B-483	Orange	57.5	30.48	1 Roll (cont.)	B30-R6000
139928	BBP37,35	Fig. 33	B30C-4000-483OR-KT	B-483	Orange	101.6	30.48	1 Roll (cont.)	B30-R6000

Repositionable Vinyl (B-581)

- Aggressive adhesive stays in place but removes cleanly without leaving adhesive residue
- Ideal for temporary, removable and repositionable labels, such as 5S and lean inventory labels

Service temp: -40°C to 82°C Application temp: 10°C to 82°C
Average Outdoor Durability: 5 years

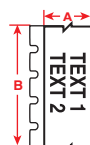


Figure 33



Part No.	Fits Printer Model(s)	Diagram	Reference	B#	Colour	Label Width A (mm)	Roll Length B (m)	Labels Per Roll	Rec. Ribbon
118006	BBP37,35, 31, 33	Fig. 33	B30C-500-581-WT	B-581	White	12.7	30.48	1 roll (cont.)	B30-R10000
118005	BBP37,35, 31, 33	Fig. 33	B30C-1125-581-WT	B-581	White	28.58	30.48	1 roll (cont.)	B30-R10000
118004	BBP37,35, 31, 33	Fig. 33	B30C-2250-581-WT	B-581	White	57.15	30.48	1 roll (cont.)	B30-R10000
118003	BBP37,35, 31, 33	Fig. 33	B30C-4000-581-WT	B-581	White	101.6	30.48	1 roll (cont.)	B30-R10000 ✕
118010	BBP37,35, 31, 33	Fig. 33	B30C-500-581-YL	B-581	Yellow	12.7	30.48	1 roll (cont.)	B30-R10000
118009	BBP37,35, 31, 33	Fig. 33	B30C-1125-581-YL	B-581	Yellow	28.58	30.48	1 roll (cont.)	B30-R10000
118008	BBP37,35, 31, 33	Fig. 33	B30C-2250-581-YL	B-581	Yellow	57.15	30.48	1 roll (cont.)	B30-R10000
118007	BBP37,35, 31, 33	Fig. 33	B30C-4000-581-YL	B-581	Yellow	101.6	30.48	1 roll (cont.)	B30-R10000 ✕

Retro Reflective Tape (B-584)

- Highly reflective material shines back brightly when struck by light
- Ideal for labelling outdoor utility pedestals, hard hats, jobsite equipment and roof-top equipment
- Recommended for low light or inclement weather conditions

Service Temp: -40°C to 70°C

Application Temp: -18°C to 70°C (yellow & orange), 10°C to 82°C (silver)

Average Outdoor Durability: 4 to 6 years



Part No.	Fits Printer Model(s)	Diagram	Reference	B#	Colour	Label Width A (mm)	Roll Length B (m)	Labels Per Roll	Rec. Ribbon
117999	BBP37,35, 31, 33	Fig. 33	B30C-1125-584-SL	B-584	Silver	28.58	15.24	1 roll (cont.)	B30-R10000
117998	BBP37,35, 31, 33	Fig. 33	B30C-2250-584-SL	B-584	Silver	57.15	15.24	1 roll (cont.)	B30-R10000
117997	BBP37,35, 31, 33	Fig. 33	B30C-4000-584-SL	B-584	Silver	101.6	15.24	1 roll (cont.)	B30-R10000 ✘
118002	BBP37,35, 31, 33	Fig. 33	B30C-1125-584-YL	B-584	Yellow	28.58	15.24	1 roll (cont.)	B30-R10000
118001	BBP37,35, 31, 33	Fig. 33	B30C-2250-584-YL	B-584	Yellow	57.15	15.24	1 roll (cont.)	B30-R10000
118000	BBP37,35, 31, 33	Fig. 33	B30C-4000-584-YL	B-584	Yellow	101.6	15.24	1 roll (cont.)	B30-R10000 ✘
117996	BBP37,35, 31, 33	Fig. 33	B30C-1125-584-OR	B-584	Orange	28.58	15.24	1 roll (cont.)	B30-R10000
117995	BBP37,35, 31, 33	Fig. 33	B30C-2250-584-OR	B-584	Orange	57.15	15.24	1 roll (cont.)	B30-R10000
117994	BBP37,35, 31, 33	Fig. 33	B30C-4000-584-OR	B-584	Orange	101.6	15.24	1 roll (cont.)	B30-R10000 ✘

BradyGlo™ High-Intensity Photoluminescent Tape (B-526)

- For glow-in-the-dark identification up to 10 hours
- Designed for directional and evacuation marking and equipment marking
- Ideal for marking emergency utility shut-offs, fire extinguishers, alarm pulls and vital equipment controls

Service Temp: -40°C to 60°C Application Temp: 4°C to 60°C



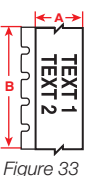
Part No.	Fits Printer Model(s)	Diagram	Reference	B#	Colour	Label Width A (mm)	Roll Length B (m)	Labels Per Roll	Rec. Ribbon
117928	BBP37,35, 31, 33	Fig. 33	B30C-1125-526	B-526	Luminous Green	28.58	15.24	1 roll (cont.)	B30-R10000
117926	BBP37,35, 31, 33	Fig. 33	B30C-2250-526	B-526	Luminous Green	57.15	15.24	1 roll (cont.)	B30-R10000
117924	BBP37,35, 31, 33	Fig. 33	B30C-4000-526	B-526	Luminous Green	101.6	15.24	1 roll (cont.)	B30-R10000 ✘

Cold Temperature Application Material (B-549)

- Special adhesive permanently adheres to extremely cold surfaces
- Can be applied in -23°C and lasts in 40°C
- Ideal for cold storage warehouses, coolers, freezers and short-term winter outdoor use

Service Temp: -40°C to 100°C Application Temp: 23°C to 100°C

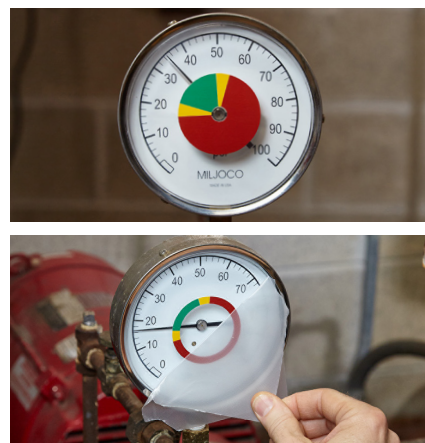
Average Outdoor Durability: Up to 1 year



Part No.	Fits Printer Model(s)	Diagram	Reference	B#	Colour	Label Width A (mm)	Roll Length B (m)	Labels Per Roll	Rec. Ribbon
117862	BBP37,35, 31, 33	Fig. 33	B30C-1125-549-WT	B-549	White	28.58	30.48	1 roll (cont.)	B30-R10000
117861	BBP37,35, 31, 33	Fig. 33	B30C-2250-549-WT	B-549	White	57.15	30.48	1 roll (cont.)	B30-R10000
117860	BBP37,35, 31, 33	Fig. 33	B30C-4000-549-WT	B-549	White	101.6	30.48	1 roll (cont.)	B30-R10000 ✘
117865	BBP37,35, 31, 33	Fig. 33	B30C-1125-549-YL	B-549	Yellow	28.58	30.48	1 roll (cont.)	B30-R10000
117864	BBP37,35, 31, 33	Fig. 33	B30C-2250-549-YL	B-549	Yellow	57.15	30.48	1 roll (cont.)	B30-R10000
117863	BBP37,35, 31, 33	Fig. 33	B30C-4000-549-YL	B-549	Yellow	101.6	30.48	1 roll (cont.)	B30-R10000 ✘

Circle Gauge Labels (B-595)

- Create circle gauge labels using the built in Circle Gauge App on the BBP®37 printer with white tape and multi-coloured panelled ribbons
- Create labels to the specific diameter and range of values for your gauge - small or large gauges
- App allows you to create in-zone, out-of-zone, caution zone(s) or all three
- Multiple gauge labels can be printed/cut within a single ribbon panel to optimize ribbon usage
- Specify center hole size to facilitate accurate label placement and visibility of info that may be printed on your gauge



LABEL SUPPLY FOR CREATING CIRCLE GAUGE LABELS

Part No.	Fits Printer Model(s)	Reference	Colour	Size
142027	BBP37,35*	B30C-4000-595-WT	White	101.6mm x 30.48m

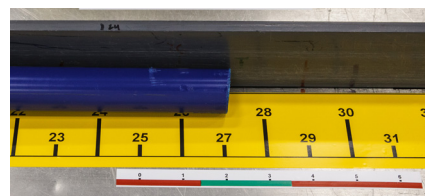
RIBBONS FOR CREATING CIRCLE GAUGE LABELS

Part No.	Fits Printer Model(s)	Reference	Colour	Size
140857	BBP37,35	B30-R10000-GR-8	Green, Red Ribbon	203.2mm panel length, 100 panel sets
140860	BBP37,35	B30-R10000-KRYG-8	Black, Red, Yellow & Green Ribbon	203.2mm panel length, 50 panel sets
140862	BBP37,35	B30-R10000-KRGB-8	Black, Red, Green and Blue Ribbon	203.2mm panel length, 50 panel sets

* Supply fits BBP35, 37 for this application, fits BBP35, 37, 31, 33 for other applications. Cutting circular shape enabled on BBP37 model only.

Gradient "Ruler" Labels (B-595)

- Create accurate scale or "ruler" labels using the built in Gradient Label App on the printer with continuous supplies
- Specify units in inches or millimeters, and choose from several interval tick mark options
- Include multiple colours on your label for multiple "zones"
- For scales longer than 7 feet (for example: labelling a large tank) combine multiple strips and set start point on second label to start where first label left off



MOST COMMON SUPPLIES FOR MAKING GRADIENT RULER LABELS (1 PRINT COLOUR)

Part No.	Fits Printer Model(s)	Reference	Colour	Size	Description
142027	BBP37,35*	B30C-4000-595-WT	White	101.6mm x 30.48m	for larger applications such as tank /vessel labelling
142029	BBP37,35*	B30C-2250-595-WT	White	57.15mm x 30.48m	for larger applications such as tank /vessel labelling
142030	BBP37,35*	B30C-1125-595-WT	White	28.58mm x 30.48m	for smaller applications such as machinery labelling
142031	BBP37,35*	B30C-500-595-WT	White	12.70mm x 30.48m	for smaller applications such as machinery labelling
142032	BBP37,35*	B30C-4000-595-YL	Yellow	101.6mm x 30.48m	for smaller applications such as machinery labelling
142034	BBP37,35*	B30C-2250-595-YL	Yellow	57.15mm x 30.48m	for smaller applications such as machinery labelling
142035	BBP37,35*	B30C-1125-595-YL	Yellow	28.58mm x 30.48m	for smaller applications such as machinery labelling
142036	BBP37,35*	B30C-500-595-YL	Yellow	12.70mm x 30.48m	for smaller applications such as machinery labelling
118084	BBP37,35*	B30-R10000	Black Ribbon	Continuous 60.96m	
118089	BBP37,35*	B30-R10000-RD	Red Ribbon	Continuous 60.96m	

Other solid colour tapes can be used with Black ribbon but those shown above are the most commonly used and offer highest visual contrast.

MOST COMMON SUPPLIES FOR MAKING GRADIENT RULER LABELS (MULTIPLE PRINT COLOUR ZONES)

Part No.	Fits Printer Model(s)	Reference	Colour	Size	Description
142027	BBP37,35*	B30C-4000-595-WT	White	101.6mm x 30.48m	for larger applications such as tank /vessel labelling
142029	BBP37,35*	B30C-2250-595-WT	White	57.15mm x 30.48m	for larger applications such as tank /vessel labelling
142030	BBP37,35*	B30C-1125-595-WT	White	28.58mm x 30.48m	for smaller applications such as machinery labelling
142031	BBP37,35*	B30C-500-595-WT	White	12.70mm x 30.48m	for smaller applications such as machinery labelling
140850	BBP37,35*	B30-R10000-KR-8	Black, Red Ribbon	203.2mm panel length, 100 panel sets	
140862	BBP37,35	B30-R10000-KRGB-8	Black, Red, Green & Blue Ribbon	203.2mm panel length, 50 panel sets	
140860	BBP37,35	B30-R10000-KRYG-8	Black, Red, Yellow & Green Ribbon	203.2mm panel length, 50 panel sets	

* Supply fits BBP35, 37 for this application, fits BBP35, 37, 31, 33 for other applications.

Arc Flash Labels (B-595)

- Create multi-colour Arc Flash labels using pre-printed header supplies and the built in Arc Flash App on the BBP®35 and BBP®37 printers or Brady Workstation
- Simple app prompts you for text on each panel variable then automatically lays out the complete label
- Create labels with your panel's data in all black text or with red variables
- Pre-printed header supplies available with Danger or Warning formats
- Printer can also print complete label on white continuous supply using multi-colour panelled ribbons



SUPPLIES FOR CREATING ARC FLASH LABELS USING PRE-PRINTED HEADERS

Part No.	Fits Printer Model(s)	Colour	Size	Description
872948	BBP37,35	WARNING Header	101.6mm x 152.4mm, 175 pcs	
872946	BBP37,35	WARNING Header	57.15mm x 76.2mm, 300 pcs	
142190	BBP37,35	DANGER Header	101.6mm x 152.4mm, 175 pcs	
142191	BBP37,35	DANGER Header	57.15mm x 76.2mm, 300 pcs	
118084	BBP37,35*	Black Ribbon	Continuous 60.96m	For black text beneath header
140850	BBP37,35	Black & Red Ribbon	203.2mm panel length, 100 panel sets	For black text w/red variables beneath header

SUPPLIES FOR CREATING ARC FLASH LABELS USING WHITE CONTINUOUS TAPE

Part No.	Fits Printer Model(s)	Colour	Size	Description
142027	BBP37,35*	White	101.6mm x 152.4mm	For 101.6mm x 152.4mm arc flash labels
142029	BBP37,35*	White	57.15mm x 76.2mm	For 57.15mm x 76.2mm arc flash labels
140847	BBP37,35	Black & Orange Ribbon	203.2mm panel length, 100 panel sets	For Warning header with black text
140865	BBP37,35	Black, Red, Blue & Orange Ribbon	203.2mm panel length, 50 panel sets	For Warning header with black or red text
140850	BBP37,35	Black, Red	203.2mm panel length, 100 panel sets	For Danger header with black text

* Supply fits BBP35, 37 for this application, fits BBP35, 37, 31, 33 for other applications.

Make Your Own Rigid Valve Tags

- Print labels on your Brady printer and apply them to these industrial-grade plastic tags
- Outdoor tag withstands temps -40°C to 82°C
- Die-cut (pre-cut) label supplies fit recessed area on tag



LABELS & RIBBON FOR MAKING VALVE TAGS

Part No.	Colour	Label Size	Labels per Roll
142197	White	57.15 x 97.79mm	250 pcs for LG tag
142196	White	28.58 x 72.39mm	300 pcs for SM tag
118084	Black	Continuous 69.96m	Print Ribbon

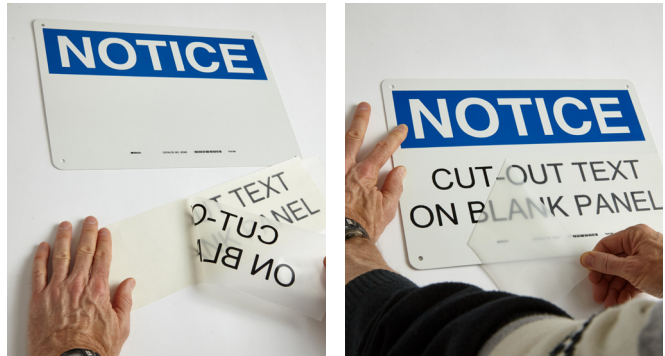
Fits Printer Model(s)	Small Tag Part No.	Large Tag Part No.	Colour
BBP37,35, 31, 33	41920	41921	Black
BBP37,35, 31, 33	41922	41923	Yellow
BBP37,35, 31, 33	41924	41925	Red
BBP37,35, 31, 33	41926	41927	Blue
BBP37,35, 31, 33	41928	41929	Green
BBP37,35, 31, 33	87694	87695	Orange
BBP37,35, 31, 33	87696	87697	White
BBP37,35, 31, 33	87698	87699	Gray
BBP37,35, 31, 33	87710	87711	Brown

TAG SIZES

Description	Height (mm)	Width (mm)
Large Tag	63.5	101.6
Small Tag	38.1	76.2

Blank Rigid Panels

- Create rigid labels and signs using adhesive output from your printer
- Ideal for labelling situations and surfaces where applying an adhesive label is difficult
- Labels can be hand-applied to panel
- Panels are pre-drilled with holes in corners for mounting with screws or cable-ties



Print text or pictogram | Remove liner | Apply to blank sign panel.



600x450 MTL **832527**
 600x450 POLY **841935**
 450x300 MTL **832526**
 450x300 POLY **841936**
 300x225 MTL **841938**
 300x225 POLY **841937**



600x450 MTL **863528**
 600x450 POLY **841901**
 450x300 MTL **863531**
 450x300 POLY **863530**
 300x225 MTL **863529**
 300x225 POLY **841905**



600x450 MTL **834071**
 600x450 POLY **841969**
 450x300 MTL **834070**
 450x300 POLY **841970**
 300x225 MTL **863514**
 300x225 POLY **841971**



600x450 MTL **863522**
 600x450 POLY **841887**
 450x300 MTL **863523**
 450x300 POLY **841889**
 300x225 MTL **863525**
 300x225 POLY **863524**



600x450 MTL **863518**
 600x450 POLY **863519**
 450x300 MTL **863520**
 450x300 POLY **841896**
 300x225 MTL **841897**
 300x225 POLY **863521**



600x450 MTL **841916**
 600x450 POLY **841915**
 450x300 MTL **863513**
 450x300 POLY **863512**
 300x225 MTL **841920**
 300x225 POLY **841919**



600x450 MTL **863533**
 600x450 POLY **863532**
 450x300 MTL **841911**
 450x300 POLY **841910**
 300x225 MTL **863535**
 300x225 POLY **863534**



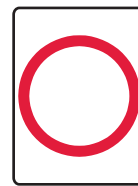
600x450 MTL **841963**
 600x450 POLY **863527**
 450x300 MTL **841965**
 450x300 POLY **841964**
 300x225 MTL **863526**
 300x225 POLY **841966**



600x450 MTL **832521**
 600x450 POLY **841950**
 450x300 MTL **832520**
 450x300 POLY **841951**
 300x225 MTL **841953**
 300x225 POLY **841952**



300x450 POLY **863515**
 225x300 MTL **863517**
 225x300 POLY **863516**



450x600 POLY **841922**
 180x250 SS **841926**



450x600 MTL **833308**
 450x600 POLY **863509**
 300x450 MTL **833309**
 300x450 POLY **841928**
 225x300 MTL **841930**
 225x300 POLY **863510**

Product ID Materials

- A variety of polyester and specialty materials in wide format rolls designed for shape cutting multiple labels out of a single continuous roll
- Ideal for smaller volume custom shape cutting of Product ID and general industrial labels
- Proven materials with agency approvals for Product ID and asset tracking applications

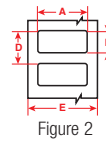


Figure 2

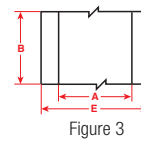


Figure 3



B-424: Paper	Matte Bright White	Service temp: -40°C to 51°C	RoHS
B-423: Polyester w/standard adhesive	Gloss White	Service temp: -70°C to 120°C	UL RoHS CE
B-432: Polyester w/ stronger adhesive	Clear	Service temp: -40°C to 100°C	UL RoHS CE
B-483: Polyester w/ ultra-aggressive adhesive for rough surfaces	Gloss White	Service temp: -70°C to 120°C	UL RoHS CE
B-484: Polyester w/ ultra-aggressive adhesive and pliability for angular surfaces	Gloss White	Service temp: -40°C to 115°C	UL RoHS
B-489: Polyester w/ ultra-aggressive adhesive for rough surfaces	Matte White	Service temp: -70°C to 120°C	UL RoHS CE
B-488: Polyester w/ standard adhesive and chemical resistance	Matte White	Service temp: -40°C to 160°C	RoHS CE
B-428: Metallized Polyester w/standard adhesive for smooth surfaces	Matte Silver	Service temp: -40°C to 145°C	UL RoHS CE
B-434: Metallized Polyester w/stronger adhesive for textured surfaces	Gloss Silver	Service temp: -40°C to 90°C	UL RoHS CE
B-486: Metallized Polyester w/ultra-aggressive adhesive for rougher surfaces	Matte Silver	Service temp: -40°C to 120°C	UL RoHS CE
B-565: Metallized polyester w/ standard adhesive	Matte Silver	Service temp: -40°C to 115°C	UL RoHS CE
B-595: Indoor/Outdoor vinyl	Semi-Gloss White	Service temp: -40°C to 82°C	RoHS
B-724: Polyimide label for extremely high temperatures	Matte Amber	Service temp: -70°C to 270°C	RoHS
B-727: Polyimide label for standard temperatures	Gloss White	Service temp: -70°C to 100°C	UL RoHS
B-437: Tedlar® for high temp labelling & cable wraps	Gloss White	Service temp: -70°C to 135°C	RoHS
B-787: Polyvinyl fluoride tape	Gloss White	Service temp: -70°C to 100°C	RoHS

Part No.	Fits Printer Model(s)	Reference	Colour	Size (mm)	Length (m)	
145298	BBP37,35	B30C-4000-424	White	101.6	30.4	✗
143578	BBP37,35	B30C-4000-423	White	101.6	30.4	✗
145292	BBP37,35	B30C-4000-432	Clear	101.6	30.4	✗
143580	BBP37,35	B30C-4000-483	White	101.6	30.4	✗
145295	BBP37,35	B30C-4000-484	White	101.6	30.4	✗
143581	BBP37,35	B30C-4000-489	White	101.6	30.4	✗
143584	BBP37,35	B30C-4000-488	White	101.6	30.4	✗
145300	BBP37,35	B30C-4000-428	Silver	101.6	30.4	✗

Part No.	Fits Printer Model(s)	Reference	Colour	Size (mm)	Length (m)	
145293	BBP37,35	B30C-4000-434	Silver	101.6	30.4	✗
145294	BBP37,35	B30C-4000-486	Silver	101.6	30.4	✗
143579	BBP37,35	B30C-4000-437	White	101.6	30.4	✗
117920	BBP37,35	B30C-4000-565	Silver	101.6	30.4	✗
142027	BBP37,35	B30C-4000-595-WT	White	101.6	30.4	✗
145296	BBP37,35	B30C-4000-724	Amber	101.6	30.4	✗
145297	BBP37,35	B30C-4000-727	White	101.6	30.4	✗
143582	BBP37,35	B30C-4000-787	White	101.6	30.4	✗

For recommended print ribbon refer to compatibility chart on page 18.

Tamper-Evident Asset ID Labels (B-438)

- Leaves checkerboard footprint on surface and on label if removed to prevent re-use

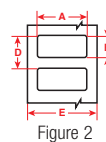


Figure 2

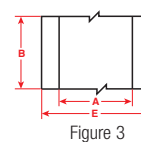
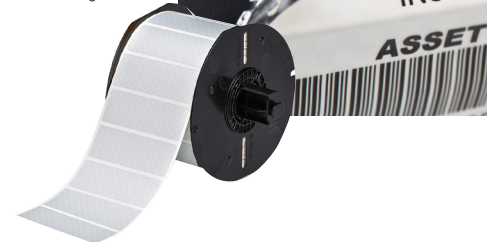


Figure 3



Part No.	Fits Printer Model(s)	Diagram	Reference	Colour	Label Width A (mm)	Label Height B (mm)	Vert. Repeat D (mm)	Web Width E (mm)	Labels Per Row	Labels Per Roll	Rec. Ribbon
118076	BBP37,35, 31, 33	Fig. 2	B30-17-438	Matte Silver	50.8	25.4	63.5	28.6	1	1225	B30-R4300
118077	BBP37,35, 31, 33	Fig. 2	B30-18-438	Matte Silver	76.2	25.4	82.6	31.8	1	1225	B30-R4300
118078	BBP37,35, 31, 33	Fig. 2	B30-222-438	Matte Silver	76.2	50.8	82.6	57.2	1	650	B30-R4300
118014	BBP37,35, 31, 33	Fig. 3	B30C-3000-438-SL	Matte Silver	76.2	30.5m		82.6		1 roll (cont.)	B30-R4300




Raised Profile Labels - Engraved Plate Substitutes - Rectangular Style (B-593)

Costs less than engraved legend plates

- High gloss, polyester label with thick raised profile and ultra-aggressive adhesive (0.70mm thick)
- Ideal for inside-panel backer board labels and front-of-enclosure labelling
- Up to 80% less than engraved plates and print out in about 4 seconds
- 10-year outdoor durability rating
- 6 colours, 7 rectangular sizes

Service Temp: -20°C to 100°C Application Temp: 10°C to 100°C

Average Outdoor Durability: Up to 10 years

Agency Approvals:   

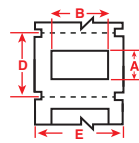
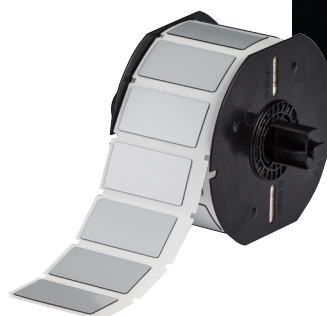
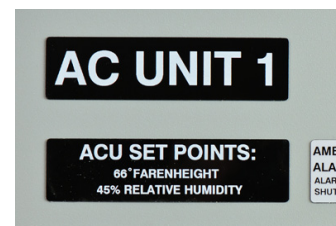


Figure 18c

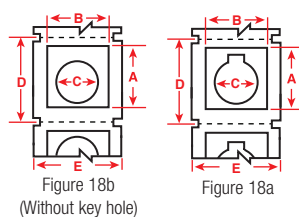


Part No.	Fits Printer Models (s)	Diagram	Reference	Colour	Height A (mm)	Width B (mm)	Vert. Repeat D (mm)	Web Width E (mm)	Labels Per Roll	Rec. Ribbon
118015	BBP37, 35, 31, 33	Fig. 18c	B30EP-171-593-WT	White	12.45	26.96	19.10	34.90	500	B30-R6000
118021	BBP37, 35, 31, 33	Fig. 18c	B30EP-172-593-WT	White	14.99	45.00	21.60	63.50	450	B30-R6000
118039	BBP37, 35, 31, 33	Fig. 18c	B30EP-175-593-WT	White	19.05	76.20	25.40	82.60	375	B30-R6000
118027	BBP37, 35, 31, 33	Fig. 18c	B30EP-173-593-WT	White	25.40	50.80	31.80	63.50	300	B30-R6000
118033	BBP37, 35, 31, 33	Fig. 18c	B30EP-174-593-WT	White	25.40	101.60	31.80	108.00	300	B30-R6000
118043	BBP37, 35, 31, 33	Fig. 18c	B30EP-176-593-WT	White	25.40	76.20	31.80	82.60	300	B30-R6000
118047	BBP37, 35, 31, 33	Fig. 18c	B30EP-177-593-WT	White	63.50	76.20	69.90	82.60	125	B30-R6000
118017	BBP37, 35, 31, 33	Fig. 18c	B30EP-171-593-YL	Yellow	12.45	26.96	19.10	34.90	500	B30-R6000
118023	BBP37, 35, 31, 33	Fig. 18c	B30EP-172-593-YL	Yellow	14.99	45.00	21.60	63.50	450	B30-R6000
118040	BBP37, 35, 31, 33	Fig. 18c	B30EP-175-593-YL	Yellow	19.05	76.20	25.40	82.60	375	B30-R6000
118029	BBP37,35, 31, 33	Fig. 18c	B30EP-173-593-YL	Yellow	25.40	50.80	31.80	63.50	300	B30-R6000
118035	BBP37,35, 31, 33	Fig. 18c	B30EP-174-593-YL	Yellow	25.40	101.60	31.80	108.00	300	B30-R6000
118044	BBP37,35, 31, 33	Fig. 18c	B30EP-176-593-YL	Yellow	25.40	76.20	31.80	82.60	300	B30-R6000
118048	BBP37,35, 31, 33	Fig. 18c	B30EP-177-593-YL	Yellow	63.50	76.20	69.90	82.60	125	B30-R6000
118020	BBP37,35, 31, 33	Fig. 18c	B30EP-171-593-BK	Black	12.45	26.96	19.10	34.90	500	B30-R4400-WT
118026	BBP37,35, 31, 33	Fig. 18c	B30EP-172-593-BK	Black	14.99	45.00	21.60	63.50	450	B30-R4400-WT
118042	BBP37,35, 31, 33	Fig. 18c	B30EP-175-593-BK	Black	19.05	76.20	25.40	82.60	375	B30-R4400-WT
118032	BBP37,35, 31, 33	Fig. 18c	B30EP-173-593-BK	Black	25.40	50.80	31.80	63.50	300	B30-R4400-WT
118038	BBP37,35, 31, 33	Fig. 18c	B30EP-174-593-BK	Black	25.40	101.60	31.80	108.00	300	B30-R4400-WT
118046	BBP37,35, 31, 33	Fig. 18c	B30EP-176-593-BK	Black	25.40	76.20	31.80	82.60	300	B30-R4400-WT
118050	BBP37,35, 31, 33	Fig. 18c	B30EP-177-593-BK	Black	63.50	76.20	69.90	82.60	125	B30-R4400-WT
118018	BBP37,35, 31, 33	Fig. 18c	B30EP-171-593-GR	Green	12.45	26.96	19.10	34.90	500	B30-R4400-WT
118024	BBP37,35, 31, 33	Fig. 18c	B30EP-172-593-GR	Green	14.99	45.00	21.60	63.50	450	B30-R4400-WT
118041	BBP37,35, 31, 33	Fig. 18c	B30EP-175-593-GR	Green	19.05	76.20	25.40	82.60	375	B30-R4400-WT
118030	BBP37,35, 31, 33	Fig. 18c	B30EP-173-593-GR	Green	25.40	50.80	31.80	63.50	300	B30-R4400-WT
118036	BBP37,35, 31, 33	Fig. 18c	B30EP-174-593-GR	Green	25.40	101.60	31.80	108.00	300	B30-R4400-WT
118045	BBP37,35, 31, 33	Fig. 18c	B30EP-176-593-GR	Green	25.40	76.20	31.80	82.60	300	B30-R4400-WT
118049	BBP37,35, 31, 33	Fig. 18c	B30EP-177-593-GR	Green	63.50	76.20	69.90	82.60	125	B30-R4400-WT
118016	BBP37,35, 31, 33	Fig. 18c	B30EP-171-593-RD	Red	12.45	26.96	19.10	34.90	500	B30-R4400-WT
118022	BBP37,35, 31, 33	Fig. 18c	B30EP-172-593-RD	Red	14.99	45.00	21.60	63.50	450	B30-R4400-WT
118028	BBP37,35, 31, 33	Fig. 18c	B30EP-173-593-RD	Red	25.40	50.80	31.80	63.50	300	B30-R4400-WT
118034	BBP37,35, 31, 33	Fig. 18c	B30EP-174-593-RD	Red	25.40	101.60	31.80	108.00	300	B30-R4400-WT
118019	BBP37,35, 31, 33	Fig. 18c	B30EP-171-593-SL	Silver	12.45	26.96	19.10	34.90	500	B30-R6000
118025	BBP37,35, 31, 33	Fig. 18c	B30EP-172-593-SL	Silver	14.99	45.00	21.60	63.50	450	B30-R6000
118031	BBP37,35, 31, 33	Fig. 18c	B30EP-173-593-SL	Silver	25.40	50.80	31.80	63.50	300	B30-R6000
118037	BBP37,35, 31, 33	Fig. 18c	B30EP-174-593-SL	Silver	25.40	101.60	31.80	108.00	300	B30-R6000

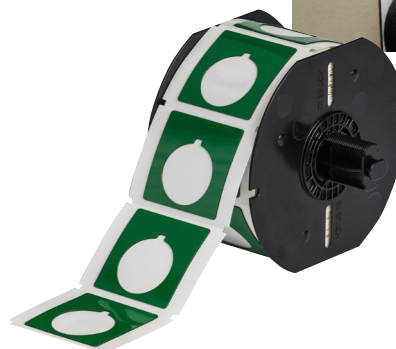
Raised Profile Labels - Engraved Plate Substitutes - Push Button Style (B-593)

Costs up to 80% less than engraved legend plates

- High gloss, polyester label with thick raised profile and ultra-aggressive adhesive (0.70mm thick)
- High performance, low cost substitute to engraved plates
- 10-year outdoor durability rating
- On-demand labelling: labels print out in less than 4 seconds
- 5 push button sizes (including keyed and non-keyed 22.5mm, and 30.5mm hole diameter keyed)



Service Temp: -20°C to 100°C Application Temp: 10°C to 100°C
 Average Outdoor Durability: Up to 10 years
 Agency Approvals:



Part No.	Fits Printer Models (s)	Diagram	Reference	Colour	Height A (mm)	Width B (mm)	Hole Dia. C (mm)	Vert. Repeat D (mm)	Web Width E (mm)	Labels Per Roll	Rec. Ribbon
118051	BBP37, 35, 31, 33	Fig. 18a	B30EP-167-593-WT	White	38.10	30.48	22.50	44.50	63.50	200	B30-R6000
118056	BBP37, 35, 31, 33	Fig. 18b	B30EP-167U-593-WT	White	38.10	30.48	22.50	44.50	63.50	200	B30-R6000
118066	BBP37, 35, 31, 33	Fig. 18a	B30EP-169-593-WT	White	45.72	45.72	30.50	50.80	63.50	190	B30-R6000
118061	BBP37, 35, 31, 33	Fig. 18a	B30EP-168-593-WT	White	48.26	30.48	22.50	54.00	63.50	180	B30-R6000
118071	BBP37, 35, 31, 33	Fig. 18a	B30EP-170-593-WT	White	60.96	60.96	30.50	66.70	82.60	145	B30-R6000
118053	BBP37, 35, 31, 33	Fig. 18a	B30EP-167-593-YL	Yellow	38.10	30.48	22.50	44.50	63.50	200	B30-R6000
118058	BBP37, 35, 31, 33	Fig. 18b	B30EP-167U-593-YL	Yellow	38.10	30.48	22.50	44.50	63.50	200	B30-R6000
118068	BBP37, 35, 31, 33	Fig. 18a	B30EP-169-593-YL	Yellow	45.72	45.72	30.50	50.80	63.50	190	B30-R6000
118063	BBP37, 35, 31, 33	Fig. 18a	B30EP-168-593-YL	Yellow	48.26	30.48	22.50	54.00	63.50	180	B30-R6000
118073	BBP37, 35, 31, 33	Fig. 18a	B30EP-170-593-YL	Yellow	60.96	60.96	30.50	66.70	82.60	145	B30-R6000
118055	BBP37, 35, 31, 33	Fig. 18a	B30EP-167-593-BK	Black	38.10	30.48	22.50	44.50	63.50	200	B30-R4400-WT
118060	BBP37, 35, 31, 33	Fig. 18b	B30EP-167U-593-BK	Black	38.10	30.48	22.50	44.50	63.50	200	B30-R4400-WT
118070	BBP37, 35, 31, 33	Fig. 18a	B30EP-169-593-BK	Black	45.72	45.72	30.50	50.80	63.50	190	B30-R4400-WT
118065	BBP37, 35, 31, 33	Fig. 18a	B30EP-168-593-BK	Black	48.26	30.48	22.50	54.00	63.50	180	B30-R4400-WT
118075	BBP37, 35, 31, 33	Fig. 18a	B30EP-170-593-BK	Black	60.96	60.96	30.50	66.70	82.60	145	B30-R4400-WT
118054	BBP37, 35, 31, 33	Fig. 18a	B30EP-167-593-GR	Green	38.10	30.48	22.50	44.50	63.50	200	B30-R4400-WT
118059	BBP37, 35, 31, 33	Fig. 18b	B30EP-167U-593-GR	Green	38.10	30.48	22.50	44.50	63.50	200	B30-R4400-WT
118069	BBP37, 35, 31, 33	Fig. 18a	B30EP-169-593-GR	Green	45.72	45.72	30.50	50.80	63.50	190	B30-R4400-WT
118064	BBP37, 35, 31, 33	Fig. 18a	B30EP-168-593-GR	Green	48.26	30.48	22.50	54.00	63.50	180	B30-R4400-WT
118074	BBP37, 35, 31, 33	Fig. 18a	B30EP-170-593-GR	Green	60.96	60.96	30.50	66.70	82.60	145	B30-R4400-WT
118052	BBP37, 35, 31, 33	Fig. 18a	B30EP-167-593-RD	Red	38.10	30.48	22.50	44.50	63.50	200	B30-R4400-WT
118057	BBP37, 35, 31, 33	Fig. 18b	B30EP-167U-593-RD	Red	38.10	30.48	22.50	44.50	63.50	200	B30-R4400-WT
118067	BBP37, 35, 31, 33	Fig. 18a	B30EP-169-593-RD	Red	45.72	45.72	30.50	50.80	63.50	190	B30-R4400-WT
118062	BBP37, 35, 31, 33	Fig. 18a	B30EP-168-593-RD	Red	48.26	30.48	22.50	54.00	63.50	180	B30-R4400-WT
118072	BBP37, 35, 31, 33	Fig. 18a	B30EP-170-593-RD	Red	60.96	60.96	30.50	66.70	82.60	145	B30-R4400-WT

REQUEST A SAMPLE PACK!

Contact us via www.bradyid.com.au/contactbrady to request a free sample pack of Brady's most popular materials, including our B-593 material.



Industrial Grade Print Ribbons

“Drop & Click” print ribbons for 5 second ribbon supply changes

- Tough, smear-proof ribbons that produce long-lasting printed text and can withstand years in industrial areas and outdoor conditions
- Self-contained cartridges drop straight into printer with a “click”
- No calibrating, no threading, no wasted feeding, no hassles and the ink will always be facing the right direction!
- Printer notifies user if installed ribbon is not recommended for installed labels



Ribbon installs in 5 seconds...
snaps into place!

BBP®35 & BBP®37 Print Ribbon / Material Compatibility

B-# Material		B30-R4300 (Black)	B30-R6000 (Black)	B30-R6200 (Black)	B30-R10000 (Black)	B30-R10000-WT (White)	B30-R4400-WT (White)	B30-R10000-YL (Yellow)	B30-R10000-YL2 (Yellow)	B30-R10000 (Colours)
B-423	Glossy White Polyester	-	●	●	-	-	-	-	-	-
B-424	Matte White Paper	●	-	-	-	-	-	-	-	-
B-428	Metallized Polyester	●	-	-	-	-	-	-	-	-
B-432	Glossy Clear Polyester	-	●	-	-	-	●	-	-	-
B-434	Glossy Metallized Polyester	-	●	-	-	-	-	-	-	-
B-437	Tedlar®	●	-	-	-	-	-	-	-	-
B-438	Tamper Evident Metallized Polyester	●	-	-	-	-	-	-	-	-
B-483	Glossy White Polyester	-	●	-	-	-	-	-	-	-
B-483	ToughStripe®	-	●	-	-	-	●	-	-	-
B-484	Glossy White Polyester	-	●	-	-	-	-	-	-	-
B-486	Matte Metallized Polyester	●	-	-	-	-	-	-	-	-
B-488	Matte White Polyester	●	-	-	-	-	-	-	-	-
B-489	Matte White Polyester	●	-	-	-	-	-	-	-	-
B-509	Printable Magnetic	-	-	-	●	-	-	-	-	● **
B-526	Photoluminescent Polyester	-	-	-	●	-	-	-	-	● **
B-549	Cold Temp Polyester	-	-	-	●	●	-	-	-	● **
B-551	Non-Adhesive Tag	-	-	-	●	-	-	-	-	● **
B-565	Metallized Polyester	-	-	-	●	-	-	-	-	-
B-569	Low-Halide Polyester	-	-	-	●	●	-	-	-	● **
B-581	Repositionable Vinyl	-	-	-	●	●	-	-	-	● **
B-584	Retro Reflective	-	-	-	●	-	-	-	-	● **
B-593	Raised Panel Engraved Plate Substitute	-	●	-	-	-	●	-	-	-
B-595	Outdoor Vinyl	-	-	-	●	●	-	● ***	● ***	● **
B-854	Toughwash™ Metal Detectable	-	●	-	-	-	-	-	-	-
B-855	Toughwash™	-	●	-	-	-	-	-	-	-
B-724	Matte Amber Polyimide	●	-	-	-	-	-	-	-	-
B-727	Glossy White Polyimide	-	●	-	-	-	-	-	-	-
B-787	Glossy White Polyvinyl Fluoride	-	●	-	-	-	-	-	-	-
B-7569	Vinyl Film	-	-	-	●	-	-	-	-	-

Refer to the corresponding Tech Data Sheets for complete material information at www.bradyid.com.au/techdata.

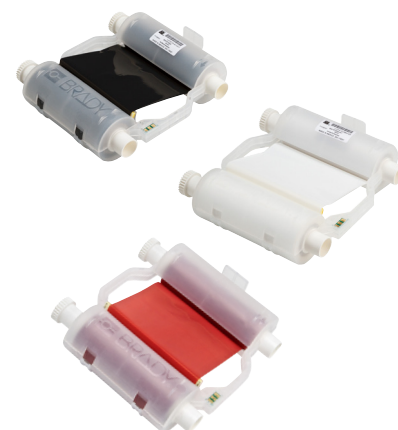
**Coloured ribbons optimized for use on white material. Test use on other material colours for suitability to your application.

***For printing yellow onto white B-595 use B30-R10000-YL. For printing yellow onto other colours of B-595 use B30-R10000-YL2.

Single Colour Print Ribbons

- Solid colour ribbons for printing a single colour onto a label
- Can be swapped out for printing multi-colour labels on BBP35 or BBP37 printer if a panelled multi-colour ribbon is not on-hand

Part No.	Fits Printer Model(s)	Reference	Colour	Size	Length
118084	BBP37,35,31,33	B30 Ribbon R10000	Black	109.9mm	60.96m
118090	BBP37,35,31,33	B30 Ribbon R10000-WT	White	109.9mm	60.96m
118085	BBP37,35,31,33	B30 Ribbon R10000-BL	Blue	109.9mm	60.96m
118086	BBP37,35,31,33	B30 Ribbon R10000-GR	Green	109.9mm	60.96m
118087	BBP37,35,31,33	B30 Ribbon R10000-MA	Magenta	109.9mm	60.96m
118088	BBP37,35,31,33	B30 Ribbon R10000-OR	Orange	109.9mm	60.96m
118089	BBP37,35,31,33	B30 Ribbon R10000-RD	Red	109.9mm	60.96m
118091	BBP37,35,31,33	B30 Ribbon R10000-YL	Yellow*	109.9mm	60.96m
143501	BBP37,35,31,33	B30 Ribbon R10000-YL2	Yellow*	109.9mm	60.96m
140856	BBP37,35,31,33	B30 Ribbon R10000-PRCCY	Process Cyan**	109.9mm	60.96m
140854	BBP37,35,31,33	B30 Ribbon R10000-PRCYL	Process Yellow**	109.9mm	60.96m
140853	BBP37,35,31,33	B30 Ribbon R10000-PRCMA	Process Magenta**	109.9mm	60.96m
118093	BBP37,35,31,33	B30 Ribbon R6000	Black	109.9mm	60.96m
143119	BBP37,35,31,33	B30 Ribbon R6200	Black	109.9mm	60.96m
118094	BBP37,35,31,33	B30 Ribbon R4300	Black	109.9mm	60.96m
118097	BBP37,35,31,33	B30 Ribbon R4400-WT	White	109.9mm	60.96m

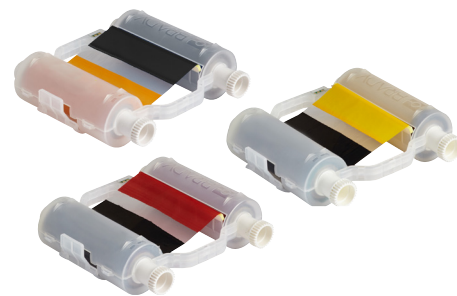


* For printing yellow onto white B-595 use B30-R10000-YL. For printing yellow onto other colours of B-595 use B30-R10000-YL2.

** Process ribbons print a much lighter shade - designed to be used together with other process ribbons and black ribbon to lay down a dot pattern for printing "blended" colours and process colour objects.

Multi-Colour Panelled Print Ribbons

- Ribbons have panels of 2- or 4-different colours for printing multiple colours onto a label
- Use CMYK ribbon for printing blended colours. Blended colours are not as saturated as solid or spot colour panelled ribbons, but do offer a broader palette of available colours and shades
- Print multiple colours without having to swap in multiple ribbons



Two Colour Print Ribbons

Part No.	Fits Printer Model(s)	Reference	Colour	Size	Length
203mm panel length - Typical yield: 100 panel sets per roll					
140850	BBP37,35	B30 Ribbon R10000-KR-8	Black and Red	101.9mm x 203.2mm Panels	60.96m
140849	BBP37,35	B30 Ribbon R10000-KY-8	Black and Yellow	101.9mm x 203.2mm Panels	60.96m
140848	BBP37,35	B30 Ribbon R10000-KB-8	Black and Blue	101.9mm x 203.2mm Panels	60.96m
140847	BBP37,35	B30 Ribbon R10000-KO-8	Black and Orange	101.9mm x 203.2mm Panels	60.96m
140846	BBP37,35	B30 Ribbon R10000-KG-8	Black and Green	101.9mm x 203.2mm Panels	60.96m
140857	BBP37,35	B30 Ribbon R10000-GR-8	Green and Red	101.9mm x 203.2mm Panels	60.96m
406mm panel length - Typical yield: 60 panel sets per roll					
140864	BBP37,35	B30 Ribbon R10000-KR-16	Black and Red	101.9mm x 406.4mm Panels	60.96m
140855	BBP37,35	B30 Ribbon R10000-KY-16	Black and Yellow	101.9mm x 406.4mm Panels	60.96m
140852	BBP37,35	B30 Ribbon R10000-KB-16	Black and Blue	101.9mm x 406.4mm Panels	60.96m
140863	BBP37,35	B30 Ribbon R10000-KO-16	Black and Orange	101.9mm x 406.4mm Panels	60.96m
140845	BBP37,35	B30 Ribbon R10000-KG-16	Black and Green	101.9mm x 406.4mm Panels	60.96m
140851	BBP37,35	B30 Ribbon R10000-RB-16	Red and Blue	101.9mm x 406.4mm Panels	60.96m

Four Colour Print Ribbons

Part No.	Fits Printer Model(s)	Reference	Colour	Size	Length
203mm panel length - Typical yield: 50 panel sets per roll					
140862	BBP37,35	B30 Ribbon R10000-KRGB-8	Black, Red, Green, Blue	101.9mm x 203.2mm Panels	60.96m
140860	BBP37,35	B30 Ribbon R10000-KRYG-8	Black, Red, Yellow, Green	101.9mm x 203.2mm Panels	60.96m
140866	BBP37,35	B30 Ribbon R10000-KRYB-8	Black, Red, Yellow, Blue	101.9mm x 203.2mm Panels	60.96m
140865	BBP37,35	B30 Ribbon R10000-KRBO-8	Black, Red, Blue, Orange	101.9mm x 203.2mm Panels	60.96m
140867	BBP37,35	B30 Ribbon R10000-CMYK-8	Process Cyan, Mgnta, Yell, Blk**	101.9mm x 203.2mm Panels	60.96m
406mm panel length - Typical yield: 30 panel sets per roll					
140858	BBP37,35	B30 Ribbon R10000-KRGB-16	Black, Red, Blue, Green	101.9mm x 406.4mm Panels	60.96m
140859	BBP37,35	B30 Ribbon R10000-KRYB-16	Black, Red, Yellow, Blue	101.9mm x 406.4mm Panels	60.96m
140861	BBP37,35	B30 Ribbon R10000-CMYK-16	Process Cyan, Mgnta, Yell, Blk**	101.9mm x 406.4mm Panels	60.96m

** Process ribbons print a much lighter shade - designed to be used together with other process ribbons and black ribbon to lay down a dot pattern for printing "blended" colours and process colour objects.

Brady Workstation

Create labels on your PC and send to your printer. Brady has revolutionised the way you create labels on your PC with the new Brady Workstation and its apps that are specific to the projects you want to execute. It's built to be super powerful and super simple – just pick the apps you need to get your job done.

How does it work? Download the free Brady Workstation program then fill it with the apps you need and leave out the ones you don't.

Apps made to work for you. These apps feature built in regulations and standards, pictograms, common phrases, data importing, guidance and help functions – all to help you create signs and labels to keep your facility compliant and safe. Most of the apps are free, while others vary in cost with the option of a 14-day free trial.



Available Brady Workstation Apps

There are several label creation apps within Brady Workstation to fit a wide variety of applications. Don't need all of the apps? No problem! Once Brady Workstation is downloaded to your PC, you can choose which apps you want and leave out the ones you don't.



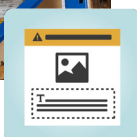
Custom Designer App

Design anything you can imagine in this free app. Start with a blank canvas to create a label or sign that meets your unique needs. Add barcodes or QR codes, import data from Excel and more!



GHS Labels App

Creating GHS labels is now amazingly simple. Enter your SDS data one time in simple drop down list and template text entry fashion, and you can create any size label and print it at any time.



Express Signs App

Create your signs in no time with this free app. Simply pick a template, enter your info and you're ready to print! Don't like the layouts? Adjust them.



Lockout Writer App

Quickly create compliant lockout tagout labels. This app includes procedure printing templates, simple translations, easy-to-use image editing for callouts, and import capabilities from Lockout-Pro™ software.



Pipe Marker & Arrow Tape Apps

Easily comply with the latest pipe marking standard, AS 1345-1995 or choose a different standard if you wish. This free app allows you to create customised pipe markers, then save them to use again whenever you want more.

DOWNLOAD WORKSTATION TODAY!

Visit workstation.bradyyid.com to download the program and choose from several apps, including Express Signs app, Pipe Marker app, Custom Designer app, GHS app and Lockout Writer app.



1. Download Brady Workstation at **workstation.bradyyid.com**
2. Fill the workstation with the apps you want and leave out the ones you don't
3. Save time by quickly designing labels within the app and then printing them on your BBP®31, BBP®33, BBP®35, BBP®37, BBP®85 and GlobalMark®2 printers

What is a Visual Workplace?

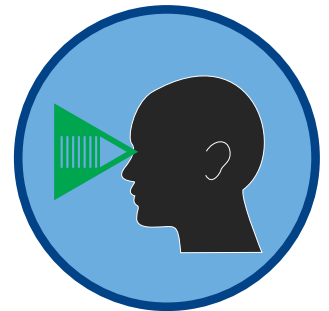
Visual workplace is a lean concept that's all about putting important information right where employees need to see it. This concept plays a critical role in some of the most popular lean tools, including 5S. That's because it creates a sustaining base for lean improvements to remain clearly visible, readily understood and consistently adhered to.

Using labels for safety information, procedures, facility identification and a variety of other applications is a great way to help reduce waste, enhance knowledge and improve productivity for the long haul.

Reduce Waste

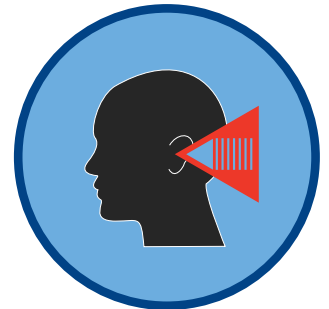
Waste is typically caused by information gaps - employees simply not knowing the best way to get the job done. Time is wasted searching, waiting, retrieving and doing rework.

With a visual workplace, employees have the information they need to effectively do their jobs. And when employees know how to tackle their jobs well, your facility benefits from significant improvements.



Enhance Knowledge

A good visual tells an employee exactly what procedural and safety information they need to know, and when and where they need to know it.



Improve Productivity

With effective workplace visuals, employees have the knowledge they need to eliminate non-value-added waste, improve safety and compliance, and enhance workplace organisation.



Did you know?

75% of knowledge is gained through visuals

13% through hearing and 12% through smell, touch and taste.*

* Laird, D. (1985). Approaches to training and development . Addison-Wesley.

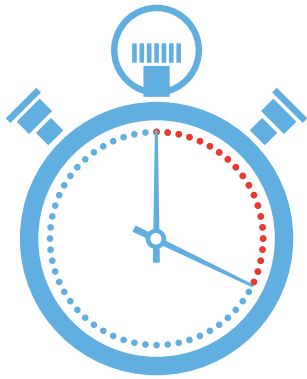
Why Do-It-Yourself Labelling?

It's more COST Effective

That's because there is:

- ✓ **NO** purchase order charges for every order
- ✓ **NO** minimum order quantity
- ✓ **NO** inventory costs for stocking large quantities of signs and labels

With an onsite label printer, you can simply print what you want to print, whenever you want to print it, right at the point of need.



It's more EFFICIENT

There's no need to wait – You'll have your labels in seconds, not days. That means there's no time away from your current project because you don't have to wait around for your pre-made signs and labels to arrive. When you recognise the need for new visuals in your facility, you can walk up and print what you need – Just like that!

It's CONVENIENT

When you have an easy-to-use printing tool ready and waiting right at your own facility, you can:

- **Create** labels using built-in label templates for common applications, such as lockout/tagout, GHS, signs, pipe markers and much more
- **Utilize** a wide offering of labelling materials to meet your application needs
- **Pace** your labelling projects, instead of doing it all at once in the case of ordering pre-made labels and signs
- **Complete** projects quickly by sharing the responsibility amongst multiple employees



It's CUSTOMISED

This isn't a one-size-fits-all approach. It's important to be able to customise workplace visuals to align with your unique safety, compliance and productivity goals. With on-demand printing, you can decide what to make, how it should look and how many you need.

Printer Specifications

Multi-colour label printers with unprecedented capabilities, unrivaled ease of use and the best materials. There's never been a better tool to label your entire facility.

BBP®37
COLOR & CUT
SIGN & LABEL PRINTER

BBP®35
MULTICOLOR SIGN & LABEL PRINTER

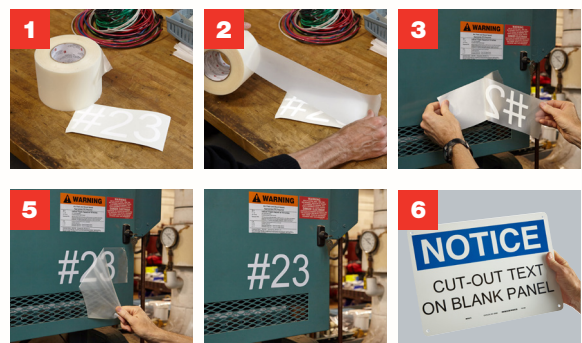
BBP®35 Printer and BBP®37 Printer																			
Description	Facility, Safety and Lean 5S printer for walk up and print ease of use, fast supply changeovers, multicolour printing and ability to cut-out text and shapes (cut-outs enabled on BBP37 only). Best choice for "lean event" labelling situations and multiple user locations because it has a very approachable interface and very fast supply changeovers.																		
Applications	Facility & Safety ID, Signs, Pipe Markers, Lean/5S, Arc Flash Labels, GHS & Chemical Labels, Equipment Labels, Panel & Push Button Labels, Reflective & Glow in the Dark Labels, Tags, Magnetic, Cold-Temp Labelling. Cut-out Text with BBP37 only.																		
Label Material Types	Extremely aggressive 8-10 year outdoor vinyl with high tack and chemical resistance, plus Toughstripe® floor tape, wash-down material, 10-hr glow in the dark, reflective, magnetic, tags, engraved plate substitute and 20 other materials.																		
Includes	Printer, Power Cord, USB Cable, Cleaning Kit, Cutter Cleaning Tool, Quick Start Guide																		
Warranty	5 year																		
Printer Features:																			
Print Resolution	300 dpi																		
Colour Printing Capability	Multi Colour																		
Maximum Print Speed	5 in/sec																		
Cutter Type	Auto Cutter. BBP37 also has XY Cutter.																		
Media Sensor Adjustment	None																		
Display & User Interface:																			
Display Type	Colour Touch Screen																		
Display Size	92 x 152 mm																		
Keyboard Type	Full Size QWERTY																		
Supply Remaining Gauge	Yes																		
Languages	English, Spanish, Portuguese, French																		
Units	Inches, millimeters, points																		
Stand-Alone Apps & Editing:																			
Built-In Label Wizards	<table border="1"> <tr> <td>Custom Label</td> <td>Arc Flash</td> <td>WHMIS</td> </tr> <tr> <td>GHS / CLP</td> <td>Circle Gauge</td> <td>Tags</td> </tr> <tr> <td>Safety Signs</td> <td>Gradient Scale</td> <td>General Templates</td> </tr> <tr> <td>Pipe Marker</td> <td>Right-To-Know</td> <td>Quick Label</td> </tr> </table>	Custom Label	Arc Flash	WHMIS	GHS / CLP	Circle Gauge	Tags	Safety Signs	Gradient Scale	General Templates	Pipe Marker	Right-To-Know	Quick Label						
Custom Label	Arc Flash	WHMIS																	
GHS / CLP	Circle Gauge	Tags																	
Safety Signs	Gradient Scale	General Templates																	
Pipe Marker	Right-To-Know	Quick Label																	
Fonts / Graphics / Symbolologies:																			
Font Sizes	1.27 - 90 mm																		
Font Styles	Arial, Arial 65, Courier New, Tahoma, Times New Roman plus more with Brady Workstation. Can also import TrueType fonts to printer																		
Symbols Quantity	664																		
Symbols Categories	<table border="1"> <tr> <td>Arrows</td> <td>Imported Graphics</td> <td>Prohibition Shapes</td> </tr> <tr> <td>Fire Safety</td> <td>ISO Graphics</td> <td>Sign Headers</td> </tr> <tr> <td>First Aid/Rescue</td> <td>Mandatory</td> <td>Warning</td> </tr> <tr> <td>Hazardous Transport</td> <td>Miscellaneous</td> <td>WHMIS</td> </tr> <tr> <td>Hazmat GHS/CLP</td> <td>Packaging</td> <td></td> </tr> <tr> <td>Hazmat HSID</td> <td>Personal Protective Equipment</td> <td></td> </tr> </table>	Arrows	Imported Graphics	Prohibition Shapes	Fire Safety	ISO Graphics	Sign Headers	First Aid/Rescue	Mandatory	Warning	Hazardous Transport	Miscellaneous	WHMIS	Hazmat GHS/CLP	Packaging		Hazmat HSID	Personal Protective Equipment	
Arrows	Imported Graphics	Prohibition Shapes																	
Fire Safety	ISO Graphics	Sign Headers																	
First Aid/Rescue	Mandatory	Warning																	
Hazardous Transport	Miscellaneous	WHMIS																	
Hazmat GHS/CLP	Packaging																		
Hazmat HSID	Personal Protective Equipment																		
Barcode Symbolologies - Linear	Code 39 Code 128 Auto Interleaved 2 of 5 Additional through Brady Workstation																		
Barcode Symbolologies - 2D	QR Code PDF417 Additional through Brady Workstation																		
Media / Supplies Information:																			
Compatible Media	B30 Series (manufactured after September 1, 2015)																		
Compatible Ribbons	B30 Series (manufactured after September 1, 2015)																		
Die Cuts vs Continuous	Continuous Tapes, Pre-Printed Die Cut Labels, General Die Cut Labels Media: Supplied in cartridge, drops into place, 15 sec changeover Ribbon: Supplied in cartridge, snaps into place, 5 sec changeover																		
Ribbon & Label Installation																			
Custom Media Parts Available	No																		
Media Widths	12.7 - 101.6 mm																		
Compatible Brady Material Numbers	B-423, B-424, B-428, B-432, B-434, B-437, B-438, B-483, B-484, B-486, B-488, B-489, B-509, B-526, B-549, B-551, B-565, B-569, B-581, B-584, B-593, B-595, B-724, B-727, B-787, B854, B-855, B-7569																		
Software & Connectivity:																			
Connectivity Options	Stand-alone use, Ethernet, USB																		
Software Compatibility	Brady Workstation																		

Physical / Operational Characteristics:	
Dimensions	279 H x 483 W x 362 D (mm)
Weight	16.3 KG
Operating Temperature Range	10° to 40° C
Storage Temperature Range	-4° to 50° C
Operating Humidity Range	20%-80% RH Non- Condensing
Storage Humidity Range	15% to 90% RH Non- Condensing
Power Supply Voltage	240V
Auto Shutoff / Power Conserve	Yes
Agency Approvals / Regulatory Compliance:	
Enables Industry Compliance	USA & Canada - cULc Europe - CE (including Eu RoHS) Argentina - UL-AR and S Mark Mexico - UL NOM CoC Australia - RCM mark Russia - EAC Korea - KC China - CCC and RoHS India - BIS Taiwan - BSMI Exemption South Africa - LOA and SABS (No logo on product label) Multiple U.S. Patents Apply Printers: 6364552 B1; 6788324; 6768502 B2 BBP®37 Printer Only: 6664995 B2; Ribbon cartridges: 6860658 B2; D480749
U.S. Patents	n/a
MSDS	n/a

i TRANSFER TAPE IS THE BEST WAY TO APPLY CUT-OUT SHAPES & TEXT!

Transfer Tape Part #76737 (108mm x 60.96mm)

1. Cut out your shape or text and weed away unneeded material
2. Apply transfer tape over your cut-out objects and press firmly
3. Peel back transfer tape which will lift and expose the adhesive side of your now pre-spaced objects
4. Position object in place and press firmly onto final surface
5. Peel back transfer tape at sharp angle to surface
6. Works great for cut-out text on rigid sign panels too



BBP®37
 COLOR & CUT
 SIGN & LABEL PRINTER

BBP®35
 MULTICOLOR SIGN & LABEL PRINTER

When you need to create a safer, leaner and more productive workplace by communicating hazards, procedures and facility information at-a-glance – you need the power of a BBP®35 or BBP®37 sign and label printer. With multi-colour printing, shape-cutting capabilities and fast printing, you can colour your way to an improved workplace by creating effective visuals right when you need them.



Printers

Part No.	Description
876622	BBP35 Multicolour Sign & Label Printer
876623	BBP37 Colour & Cut Sign & Label Printer

Brady Workstation

Visit workstation.bradyyid.com

Part No.	Description
Free Download	Brady Workstation Program
145449	GHS Labels app for Brady Workstation (download)
145445	Lockout Writer app for Brady Workstation (download)
Free Download	Custom Designer app for Brady Workstation
Free Download	Express Signs app for Brady Workstation
Free Download	Pipe Marker app for Brady Workstation
Free Download	Arrow Tape app for Brady Workstation
Free Download	Arc Flash app for Brady Workstation

Check workstation.bradyyid.com for up-to-date apps.

Printer Accessories

Part No.	Description
108365	Rolling case with handle, 2 pockets for supplies
142114	5 pack of extra media wipers
33969	Cleaning swabs that are pre-soaked in IPA (50 per pack)
76737	Transfer tape for cut-out objects (200 ft. roll)

Brady360®
5-Year Warranty
We have you Covered.

5 YEAR WARRANTY

We always stand behind our products to make sure they exceed your expectations and to deliver you an unrivaled customer experience. We've strengthened our commitment to you with a **5-year printer warranty standard and free of charge** on our benchtop printer models.*

With a team of certified tech support and repair technicians and our 5-year warranty backing you up, you can rest assured you'll have the support you need — every step of the way.

Our 5-year warranty covers repair parts & labor, one print head replacement, a stress-free printer setup session and much more.

*Excludes repairs due to negligence, Wraptor™ model and handheld models. See www.bradyyid.com.au/warranty for full coverage details.

Learn more now at www.bradyyid.com.au/bbp37

Multiple U.S. Patents Apply
 Printers: 6364552 B1; 6788324; 6768502 B2
 BBP®37 Printer Only: 6664995 B2;
 Ribbon cartridges: 6860658 B2; D480749

Brady Australia Pty Ltd
 Customer Service: 1800 620 816
www.bradyyid.com.au