



Improve Productivity with Lab-Durable Colour

with the BradyJet J2000 Colour Label Printer

Improve productivity with lab-durable colour

Keeping your samples properly identified is an important part of any successful project. But, harsh environments and limited space can significantly narrow down your identification options. With the BradyJet J2000 Colour Label Printer you get colourful identification that improves productivity, and reduces errors while surviving even the harshest lab environments. This compact inkjet printer provides long-lasting identification you can rely on. Enjoy a variety of time-saving options, including:

- ✧ **Colourful identification** – Quickly and easily differentiate your samples with more than 16 million colour options
- ✧ **Labels for every environment** – Protect your research with colours and labels that survive the harshest lab environments
- ✧ **Performance printing in a small footprint** – Get clear identification fast without taking up too much space
- ✧ **Fast label setup** – Take the guesswork out of label setup with Intelligent Print (IP) enabled materials that communicate with the printer and software so you can get back to work faster

The complete BradyJet J2000 solution



BradyJet J2000
Colour Label Printer

Pages 3-5



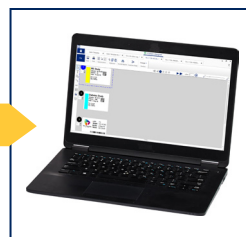
Top applications
gallery

Page 6



Labels and
tags

Pages 7-9



Software for label
creation

Page 10



Printer technical
specifications

Page 11

BradyJet J2000

COLOUR LABEL PRINTER



- 1 Roll holder with label part detection**
Printer auto-detects the part installed and automatically sets up the label size, orientation and repeat information in the software so you only have to enter text, then print.
- 2 Brady Workstation compatibility**
Compatible with Brady Workstation software, including the Laboratory Identification Suite and GHS app.
- 3 Sensor adjustment for die-cut label styles**
Adjustable sensor allows for multiple die-cut label styles as well as continuous label supply.
- 4 Ink cartridge**
CMY ink cartridge snaps into place in seconds and prints on all J20 series materials.
- 5 4800 dpi print resolution**
Ultra-sharp resolution makes it ideal for small text and barcodes as well as graphics and photo images.
- 6 More than 16 million colour variations**
One cartridge for more than 16 million colour possibilities that withstand moisture, extreme temperatures and chemical exposure.
- 7 Built-in auto cutter**
Built-in cutter that can completely cut through media after each label or at end of job.
- 8 Auto-justify media loading for up to 100mm rolls**
Media flanges automatically left-justify making loading 25mm to 101mm wide rolls fast and easy.
- 9 Data connectivity options**
(1) USB 2.0 port and Ethernet connectivity on the back of printer.
- 10 Automatic label feed**
Feed labels easily with 1-touch buttons that auto feed labels into and out of the printer, and move the ink cartridge to the change-out position.
- 11 Status Monitor**
Your screen shows the printer status, remaining ink and allows you to set the print quality, speed levels, print head cleaning settings and conduct print head alignment calibration.
- 12 Small footprint, lightweight**
Easy to move and doesn't take up a lot of space – 264mm x 177mm x 388mm and weighs only 3.6kg.

Get efficient identification with colour

You're wasting time reading through multiple samples before finding the one you need. And, without easy-to-identify labels, you're increasing the likelihood of making a mistake that could cost you years of work progress. Improve your productivity with colour. Colour identification provides an easy way to differentiate samples so you can move through your work more quickly and reduce errors. Whether you have a few samples or hundreds, the BradyJet J2000 Colour Label Printer creates more than 16 million colour options, so you can easily differentiate as many samples as you need to.



**Which is easier and faster to work with? Which reduces the chance for error?
How could colour make things better in your lab?**



Identification in even the harshest environments

Labs provide a unique set of harsh environments for labels and printing to survive. With the BradyJet J2000, you get colour and print legends that survive extreme cold, moisture, chemicals and solvents so you can clearly differentiate your samples. Check out a sample of the testing for yourself:

Environmental exposure

- ☒ Autoclave
- ☒ Liquid nitrogen

Chemical exposure

- ☒ Xylene
- ☒ Ethanol
- ☒ DMSO (dimethyl sulfoxide)
- ☒ IPA (isopropyl alcohol)
- ☒ 5% Acetic acid
- ☒ Acetone

See the science:

View the complete material testing at BradyID.com.au/Techdata and search "B-7425J"



Get high-performance printing in a small footprint

Don't let the size fool you. When you choose the BradyJet J2000 Colour Label Printer, you save on space without scrimping on performance. Complete your identification projects fast with up to 63.5mm/second print speeds, and get back to your important research. You'll also get clear identification for everything from small text, both 1D and 2D barcodes, to large text labels and even photos and logos with 4800 dpi print resolution. And, as your workspace changes with projects, this lightweight compact printer can easily be moved and fit into cramped spaces, so you don't lose precious work areas.

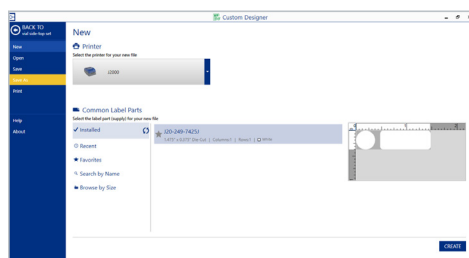


Intelligent printing technology means faster label setup

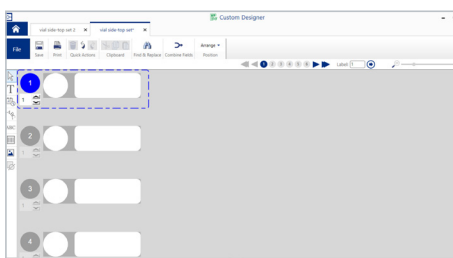
IP-enabled supplies from Brady allow the printer, labels and software to work together for efficient label setup and creation. It's all in the RFID tag embedded in BradyJet J2000 label rolls – it stores the label part size, shape, quantity of labels across and quantity on a roll. When installed, the tag sends that information to the Brady Workstation Software and automatically sets up the label part, so all you have to do is type your label text and print.



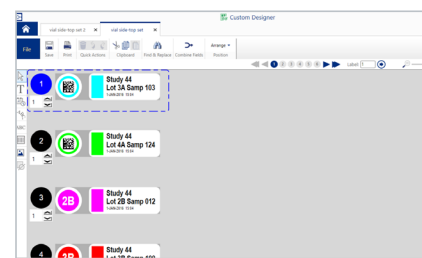
Intelligent printing enabled supplies with RFID tag



Auto-detects installed label



Sets up the label automatically



Enter your data and print!

The right label from the right company

Nothing leaves Brady's doors without meeting the highest quality standards. Backed by more than 100 years of identification experience and rigorous R&D testing, Brady manufactures materials you can trust.

With the BradyJet J2000 Colour Label Printer, you can complete identification for a variety of areas throughout your laboratory, including:



Cryo Tubes



Eppendorf Tubes



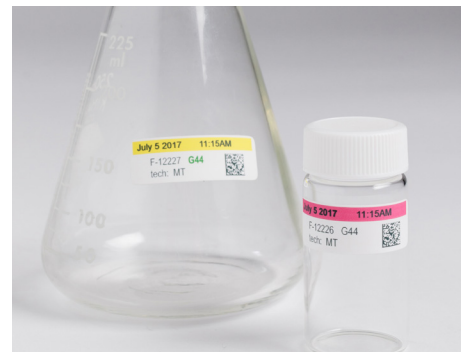
Conicals



Boxes and Plates



Slides / Chemical Exposure



Lab Glassware



GHS Labels



Lab Instructions and Housekeeping



Lab Equipment Markings

BradyJet J2000 printer and lab materials

Printers

Part No.	Description
878838	BradyJet J2000 with Brady Workstation Lab Suite

Printer ships with power cable, USB cable, (1) inkjet cartridge, (1) roll of print head calibration material, and Brady Workstation Lab Suite (software)

Ink Cartridge

Part No.	Description
150154	BradyJet J2000 Full Colour Ink Cartridge

For printing on J20 series materials.

Accessories

Part No.	Description
150160	Bradyjet J2000 Replacement Cutter Blade
150163	BradyJet J2000 Ink Pads
150506	BradyJet J2000 Alignment Roll



Specimen Tracking Labels (B-7425J)

- Sized to fit tubes, vials, slides, dishes, glassware and other containers
- White polypropylene label, adhesive and printing withstands chemicals, moisture and extreme cold

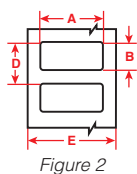


Figure 2

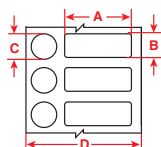


Figure 24

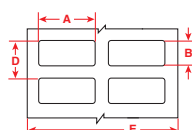


Figure 25



Diagram	Part No.	Reference No.	B#	Material	Colour	Label Width A (mm)	Label Height B (mm)	Label Area C (mm)	Labels Per Row	Labels Per Roll
Fig. 2	150007	J20-257-7425J	B-7425J	Polypropylene	White	20.95	6.35	—	1	1500
Fig. 25	150005	J20-152-7425J	B-7425J	Polypropylene	White	25.40	9.52	—	2	2000
Fig. 24	150023	J20-249-7425J	B-7425J	Polypropylene	White	25.40	9.52	9.525	1 set	1500
Fig. 2	150006	J20-59-7425J	B-7425J	Polypropylene	White	25.40	12.70	—	1	2000
Fig. 25	150015	J20-88-7425J	B-7425J	Polypropylene	White	25.40	19.05	—	2	2000
Fig. 2	150025	J20-179-7425J	B-7425J	Polypropylene	White	25.40	25.40	—	1	1500
Fig. 24	150033	J20-251-7425J	B-7425J	Polypropylene	White	25.40	12.70	11.176	1 set	1500
Fig. 2	150016	J20-256-7425J	B-7425J	Polypropylene	White	33.02	15.24	—	1	1500
Fig. 25	150020	J20-37-7425J	B-7425J	Polypropylene	White	38.10	12.70	—	2	1500
Fig. 2	150019	J20-136-7425J	B-7425J	Polypropylene	White	38.10	19.05	—	1	1500
Fig. 2	150022	J20-235-7425J	B-7425J	Polypropylene	White	38.10	25.40	—	1	1250
Fig. 2	150028	J20-258-7425J	B-7425J	Polypropylene	White	38.10	44.45	—	1	900
Fig. 2	150011	J20-151-7425J	B-7425J	Polypropylene	White	50.80	6.35	—	1	2000
Fig. 2	150024	J20-53-7425J	B-7425J	Polypropylene	White	50.80	12.70	—	1	2000
Fig. 2	150018	J20-137-7425J	B-7425J	Polypropylene	White	50.80	25.40	—	1	1500

Labels for GHS

GHS Chemical Labels

- Ideal for use on bottles, vessels, containers and packaging
- Designed for use with templates in Brady Workstation GHS App
- B-7425J polypropylene material is chemical resistant for instances where contact with chemicals is expected
- B-2595 vinyl material is ideal for general purpose applications and conforms to rough or irregular surfaces

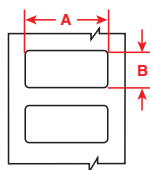


Figure 2

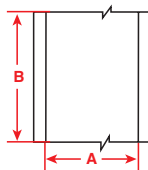


Figure 3



B-7425J Material

Chemical-resistant GHS polypropylene labels

Diagram	Part No.	Reference No.	B#	Material	Colour	Label Width A (mm)	Label Height B (mm)	Labels Per Row	Labels Per Roll
Fig. 2	150545	J20-18-7425J	B-7425J	Polypropylene	White	76.20	5.40	1	1000
Fig. 2	150543	J20-260-7425J	B-7425J	Polypropylene	White	55.11	85.09	1	340
Fig. 2	150541	J20-261-7425J	B-7425J	Polypropylene	White	74.93	109.98	1	270
Fig. 2	150544	J20-262-7425J	B-7425J	Polypropylene	White	104.90	154.94	1	200
Fig. 3	150542	J20C-1125-7425J	B-7425J	Polypropylene	White	28.57	30.5 m	N/A	1 cont.
Fig. 3	150547	J20C-2250-7425J	B-7425J	Polypropylene	White	57.15	30.5 m	N/A	1 cont.



B-2595 Material

Standard GHS vinyl labels

Diagram	Part No.	Reference No.	B#	Material	Colour	Label Width A (mm)	Label Height B (mm)	Labels Per Row	Labels Per Roll
Fig. 2	150546	J20-18-2595	B-2595	Vinyl	White	76.20	25.40	1	1000
Fig. 2	150013	J20-260-2595	B-2595	Vinyl	White	55.11	85.09	1	340
Fig. 2	150027	J20-261-2595	B-2595	Vinyl	White	74.93	109.98	1	270
Fig. 2	150032	J20-262-2595	B-2595	Vinyl	White	104.90	154.94	1	200
Fig. 3	150010	J20C-1125-2595	B-2595	Vinyl	White	28.57	30.5 m	1	1 cont.
Fig. 3	150014	J20C-2250-2595	B-2595	Vinyl	White	57.15	30.5 m	1	1 cont.
Fig. 3	150017	J20C-4000-2595	B-2595	Vinyl	White	101.6	30.5 m	1	1 cont.



Easily create your GHS labels with Brady Workstation GHS App (Part No. 145449, not included)

- Use built-in pre-formatted label layouts with approved GHS symbols
- Search the built-in chemical database by CAS number to auto-populate your label, then edit to meet your specific SDS
- Print any of the six template sizes
- No driver required when using the J2000 printer



Labels and tags for lab safety and housekeeping

General purpose lab facility materials are ideal for a variety of general lab applications, including communicating important equipment settings, warning of safety hazards, housekeeping reminders and more. These materials are not rated for extreme chemical and temperature resistance for specimen tracking.

- B-2595 vinyl material is highly conformable to a variety of rough, curved and irregular surfaces
- B-2569 polyester material is ideal for smooth surfaces and general instructions and warnings
- Use the B-2551 non-adhesive tag stock for temporary identification or instances where an adhesive cannot be used

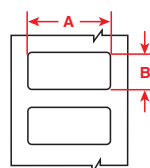


Figure 2

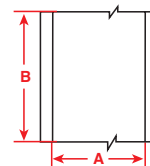


Figure 3



Figure 33b

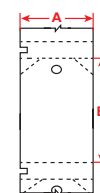


Figure 80

B-2569 Material

Inkjet-receptive polyester with permanent adhesive

Diagram	Part No.	Reference No.	B#	Material	Colour	Label Width A (mm)	Label Height B (mm)	Labels Per Roll
Fig. 2	150026	J20-260-2569	B-2569	Polyester	White	55.11	85.09	340
Fig. 2	150003	J20-261-2569	B-2569	Polyester	White	74.93	109.98	270
Fig. 2	150029	J20-262-2569	B-2569	Polyester	White	104.90	154.94	200
Fig. 3	150021	J20C-1125-2569	B-2569	Polyester	White	28.57	30.5 m	1 cont.
Fig. 3	150031	J20C-2250-2569	B-2569	Polyester	White	57.15	30.5 m	1 cont.
Fig. 3	150009	J20C-4000-2569	B-2569	Polyester	White	101.6	30.5 m	1 cont.



B-2595 Material

Inkjet-receptive vinyl with permanent adhesive

Diagram	Part No.	Reference No.	B#	Material	Colour	Label Width A (mm)	Label Height B (mm)	Labels Per Roll
Fig. 2	150013	J20-260-2595	B-2595	Vinyl	White	55.11	85.09	340
Fig. 2	150027	J20-261-2595	B-2595	Vinyl	White	74.93	109.98	270
Fig. 2	150032	J20-262-2595	B-2595	Vinyl	White	104.90	154.94	200
Fig. 3	150010	J20C-1125-2595	B-2595	Vinyl	White	28.57	30.5 m	1 cont.
Fig. 3	150014	J20C-2250-2595	B-2595	Vinyl	White	57.15	30.5 m	1 cont.
Fig. 3	150017	J20C-4000-2595	B-2595	Vinyl	White	101.6	30.5 m	1 cont.



B-2551 Material

Inkjet-receptive non-adhesive polyester tagstock

Diagram	Part No.	Reference No.	B#	Material	Colour	Tag Width A (mm)	Tag Height B (mm)	Tag Per Roll
Fig. 33b	150012	J20C-3250-2551	B-2551	Tag	White	63.50	15.24 m	1 cont.
Fig. 33b	150008	J20C-4250-2551	B-2551	Tag	White	82.55	15.24 m	1 cont.
Fig. 80	150030	J20-255-2551	B-2551	Tag	White	82.55	146.05	100



Software for easier label creation

Brady is an innovator of intuitive software to make label creation even easier and more efficient. When you pair the BradyJet J2000 Colour Label Printer with these software options, you get automatic label setup and guidance through the label creation process to minimise errors and make label creation simple.



Brady Workstation Label Creation Software

Brady Workstation revolutionises label and sign creation and printing by offering a variety of suites and apps that are easy and efficient to use. Choose and customise the tools you use to complete tasks exactly as you want without having to use print drivers. Software options that are ideal for use in a lab environment include:



Laboratory Identification Suite (included) – Ensure labels for all your lab samples and equipment are crisp, clear and contain all necessary information. Easily design and create labels for your cryovials, centrifuge tubes, bottles, conicals, slides and other samples in your laboratory.



GHS Labels App (Part No. 145449, sold separately) – Creating GHS labels is now surprisingly simple. We've streamlined the process so you can easily enter the data once from your SDS sheets into pre-formatted GHS label layouts with approved GHS symbols, then create and print any size at any time. Need labels with multiple languages? Those are also supported in the app.

Other apps and suites are available:



1. Download Brady Workstation at **Workstation.BradyID.com**



2. Place your Apps/ Suite order with Brady AU Customer Service team



3. Save time by quickly designing labels and printing them on your Brady printer.



Get your complete GHS Label App and Laboratory Identification Suite information at Workstation.BradyID.com.

Printer specifications

BradyJet J2000 Colour Label Printer	
Media Alignment	Left justified
User Interface	
Display Type	No on-printer display (status monitor shows on PC, label creation screen shows on PC via Brady Workstation software)
Display Size (diagonal)	N/A
Display Resolution (H x W)	N/A
Status Monitor Languages	English, German, Spanish, French, Italian, Japanese, Korean, Chinese (traditional), Chinese (simplified)
Status Monitor Elements and user-adjustable elements	Ink remaining, print count, override offsets and cut position, set cut mode, set language, set nozzle spit interval, set ink saturation, set print quality level, set colour matching for photo vs text
Cutter Type	Auto cutter
Maximum Label/Tape Width	108 mm
Media Sensor Adjustment	None
Maximum Labels per Day	3,000
Print Head / Printing Characteristics	
Print Resolution	up to 4800 dpi
Print Method	Thermal inkjet CMY
Print Colour Capability	Full colour CMY - 16 million colour combinations
Print Speed	up to 63.5mm/sec.
Print Width (max, cross-web)	100mm
Print Length (max, down-web)	610mm
Media Cut-off	Tear bar and auto cutter built-in (cut after each label, cut after job, or no cut)
Media Characteristics	
IP-Enabled Printing	Yes - auto-detects material for auto label setup in Brady Workstation software
Media Width (cross-web incl. liner)	25.4 mm to 107.95 mm
Label Width (cross-web)	19.05 mm to 107.95 mm
Label Length (down-web)	6.35 mm minimum
Media Thickness	0.06096 mm to 0.3987 mm
Media Roll o.d. (max)	127.0 mm
Media Roll Core i.d.	38.1 mm to 100.07 mm
Media Roll Winding	Outside
Media Styles	Die cut media, continuous media, adhesive labels, non-adhesive tagstock (linerless), perforated materials, custom labels in approved materials, all media must be J20 series media rolls
Media Material Types	Chemical resistant PP (polypropylene), PET (polyester), Vinyl, Non-adhesive PET tagstock, all media must be J20 series rolls
Media Parts Offering	32 stock parts and custom (made-to-spec) parts
Ink Characteristics	
Compatible ink cartridge	J20 series part #150154 only
Ink colour technology	CMY blended
Print calibration required?	Upon initial setup
Adjustable print quality settings	4 settings
Adjustable colour match modes	2 settings (text/graphics or photos)
Adjustable ink saturation settings	0% to 100% by 1% increments
Adjustable print nozzle spit rate	0 to 99 seconds in 1 sec intervals (printer must be plugged in and turned on)

Physical / Operational Characteristics	
Dimensions (W x D x H closed)	6.4 cm x 38.9 cm x 18.0 cm
Weight (empty)	3.2 kg
Power Supply	100 - 240V AC, 50/60 Hz 60 watts
Power Consumption	1.1W standby / 6.8-7.4W printing
Operating Environment	5 - 35° C / 10 - 60% RH non condensing
Storage Environment	-20 - 60° C / 5 - 90% RH non condensing (except cartridge)
Transport Environment	-20 - 60° C / 5 - 90% RH non condensing (except cartridge)
Auto Shutoff/Power Conserve	It is recommended the printer remain plugged in and turned on when not in use to allow nozzle cycle through spit intervals
Agency Approvals	CE, FCC class A, cUL. Contact Brady for up-to-date list of environmental compliance information and agency approvals and/or marks covering over 30 countries (awarded or applied for)
Safety Data Sheet	Yes (for ink) - available on Brady website
Interfaces and Connectivity	
USB 2.0 Hi-Speed Device Port	For PC connect
1 x Ethernet 10/100 BASE-T	For networking, remote access, and firmware updates
Software and Firmware	
Label Creation Software	Brady Workstation
Windows® Drivers*	Windows 7, 8, 8.1, 10
Options / Accessories	
Replacement Ink Pads	Sold separately as a wear spare part
Replacement Cutter Blade	Sold separately as a wear spare part

* Windows® is a registered trademark of Microsoft Corporation

**For more information, contact
Technical Support at 1800 620 816.**

We identify and protect premises, products and people.

For more information or to learn more about our innovative products, visit BradyID.com.au or call 1800 620 816

Brady Australia Pty Ltd
Customer Service: 1800 620 816
www.BradyID.com.au/J2000